

27 Hillside Avenue, St Ives, NSW 2075



Sold House

Friday, 1 March 2024

27 Hillside Avenue, St Ives, NSW 2075

Bedrooms: 4

Bathrooms: 3

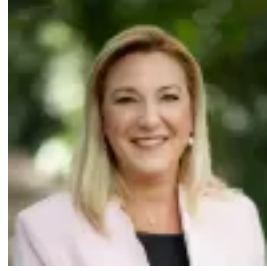
Parkings: 2

Area: 1284 m2

Type: House



David Beveridge
0296462075



Felicity Gooley
0294499066

\$2,500,000

In a stunning setting, high-side at the end of a cul-de-sac with picturesque vistas across the green district from many of its rooms, this reimagined Pettit+Sevitt welcomes with an abundance of warmth, light and style. Framed within immaculate gardens, the sun-soaked home has been orientated to embrace the north-east aspect, spilling across a substantial single level. Families will love the generous open plan living and dining plus the large family room that spill out to the extensive decks, terraces and Jacuzzi. Enjoying all day sunshine in the backyard, the pool is a superb extra, great for summer fun. Exceptionally well presented throughout, just move straight in and enjoy the properties many charms on an impressive 1284sqm that is just a stroll to bus services, St Ives North Public School and local shops. Accommodation Features: * Light filled interiors, timber flooring, galleries of glass * Spacious and open plan living and dining, ducted a/c * French doors to the deck, separate family or TV room * Large stone kitchen, dishwasher, gas cooktop * Stainless freestanding cooker, breakfast bench, laundry * Well positioned bathroom with easy access from the decks and Jacuzzi * Three bedrooms nestle in their own wing, two with robes * Private master wing featuring a study nook, robes and ensuite External Features: * Quiet cul-de-sac, end position and high-side from the road * Immaculately manicured and landscaped lawns and gardens * Expansive tiered decks, one covered, Jacuzzi, side courtyard * Superb saltwater pool with poolside terrace, double carport with lockable storage at the rear Location Benefits: * 500m to the 194, 194X, 195 and 195/6 bus services to the city, Gordon, village and St Ives Showground * 800m to St Ives Chase Kindergarten * 1km to local shops and cafes * 950m to St Ives North Public School * 1.6km to Warrimoo Oval * Moments to Masada College, Brigidine College and Sydney Grammar * Close to St Ives Shopping Village * Moments to Pymble Golf Club Contact ☎David Beveridge☎0411 225 167☎☎Disclaimer: All information contained here is gathered from sources we believe reliable. We have no reason to doubt its accuracy, however we cannot guarantee it.