

# 27 Mandalay Circuit, Beveridge, Vic 3753

CHWYLA

## House For Sale

Tuesday, 30 April 2024

27 Mandalay Circuit, Beveridge, Vic 3753

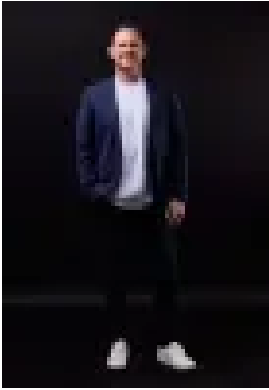
Bedrooms: 4

Bathrooms: 2

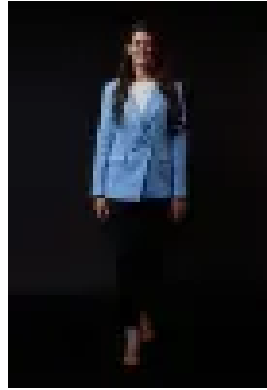
Parkings: 2

Area: 680 m2

Type: House



Paul Chwyla  
0386009995



Stacy Richards  
0386009995

**\$680,000 - \$730,000**

Make more of : 680m2 block Mandalay Four bedrooms Two bathrooms with stone benchtops Two living areas Double garage Dual exposed agg driveways Double gated side access into rear parking 3 x 3m shed Basketball court Security door Engineered boards Downlights Blinds Kitchen with 40mm stone benchtops 900mm appliances Dishwasher Walk-in pantry Master with walk-in robe Three bedrooms with built-in robes Linen storage Ducted heating Evaporative cooling Ceiling fans Covered side alfresco with ceiling fan Fire pit area with firepit and seating Covered rear alfresco with built-in barbie and café blinds Pizza oven Cubby house Low maintenance landscaping 450m to Lithgow St bus stop 650m to Club Mandalay 2.2km to Hume Freeway entrance 2.5km to Hunters Tryst 15 minutes to Merrifield 15 minutes to Marnong Estate The initial appeal – A family home on a big, 680m2 block right by everything you need. You'll be a 7ish minute walk to Mandalay Clubhouse, golf course, pool, gym, tennis courts. How good. The main attraction – A basketball court for your big kids, a cubby for your little kids, a pizza oven for your MasterChef inspired creations, a rear alfresco with a built-in barbie for your summer arvos, a side alfresco with a firepit area for your chilly evenings, dual driveways for your van and double gated side access for your weekender / future weekender. Your journey here starts this Saturday.