

27 Norman Street, Condell Park, NSW, 2200

Sold Duplex Semi-detached

Tuesday, 25 April 2023



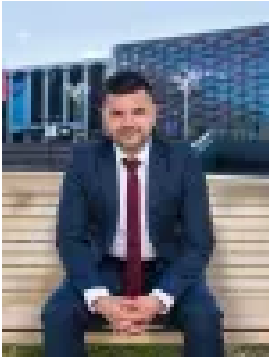
27 Norman Street, Condell Park, NSW, 2200

Bedrooms: 4

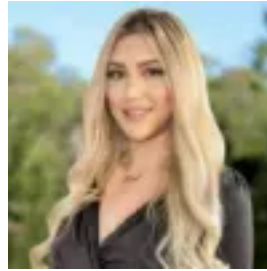
Bathrooms: 2

Parkings: 1

Type: Duplex Semi-detached



Gerice Gittany
1300884337



Maral Atai

Luxury Living at its Finest

Located ideally in suburban Condell park close to all major amenities comes this brand new luxury home showcasing elegant and modern living.

On offer:

- Four generous sized bedrooms with main offering en suite
- Spacious open plan living and dining area
- Ultra modern kitchen with book-matching marble throughout
- Aesthetically designed bathroom with back-lighting marble bench-top
- Single lock-up garage, with plenty of street parking

Architecturally designed throughout with extravagant finishes and with its central location close to all essentials this home is fitting for the growing family or the savvy investor.

The custom outdoor area, great for gatherings is ideal for entertainers hosting family and friends or a private oasis escape to enjoy and relax.

Other features include:

- Internal laundry
- Tiled throughout living
- Melamine built-in wardrobes
- Gas throughout
- Powder room
- Ample storage

Be sure to organise your inspection today

DISCLAIMER: While GM Estates have taken all care in preparing this information and used their best endeavours to ensure that the information contained therein is true and accurate, but accept no responsibility and disclaim all liability in respect of any errors, inaccuracies or misstatements contained herein. GM Estates urges prospective purchasers to make their own inquiries to verify the information contained herein.