

**27 Rainsford Street, Werribee, Vic 3030**



**Sold House**

Wednesday, 4 October 2023

27 Rainsford Street, Werribee, Vic 3030

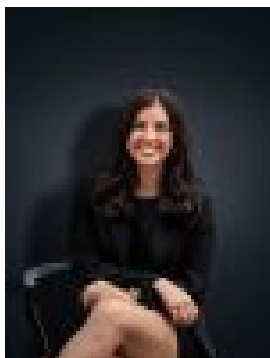
**Bedrooms: 4**

**Bathrooms: 2**

**Parkings: 2**

**Area: 642 m2**

**Type: House**



Kirsty Cunningham  
0414344475



Mitch Smit  
0397417777

**\$1,350,000**

Remarkably established with high end features throughout this home is a true rare find in sought after pocket. Rebuilt to embrace the modern era encompassing a Hamptons design this near new four-bedroom home is simply breathtaking. Everything you could dream of in a family home is right here at 27 Rainsford Street, Werribee. Versatile with multiple living zones to incorporate those that work from home or need extra room for the kids toys this spacious floor plan is smartly thought out. Behind the mesmerizing façade, the modern twist inside includes soaring 3m high ceilings, square set cornicing, Herringbone engineered oak flooring, custom steel framed glazed internal doors, window furnishings including sheer blinds & plantation shutters, ducted heating & refrigerated cooling, walk in cellar, massive floor to ceiling storage throughout includes a separate walk-in storage space to the rear of the garage. The hub of the home is a massive open plan space with the kitchen looking out over the main living and dining area. The sophisticated kitchen boasts quality appliances. A feature \*\* length island bench with curved finishes and matt finish stone is truly exceptional. Appliances include; double built in oven, 900mm gas upright cooktop, dishwasher, Ziptap and walk in butlers pantry with loads of additional storage. Additionally located to the rear of the home is a separate theatre/rumpus room. The master suite is oversized and equipped with a designer style fitted walk in robe with a built in stone makeup counter walking through to the double ensuite with feature tiling, pendant lights and matt black finishes. Whilst the remaining bedrooms are all fitted with built in robes and serviced by a central bathroom. The additional powder room flaunts kit-kat style tiling & brushed gold bathroom fittings throughout. The stacker doors to the rear of the home open out to the tiled alfresco with full view of the beautifully manicured gardens which offer ample space for children to play. As you can come to expect in a home of this calibre the long list of included extras is one of a kind! Enjoy the ease in location being positioned in the heart of Werribee within walking distance to the Werribee CBD & Train Station, Zoned for Werribee's most sought after schools and easy freeway access this home is a must inspect! (PHOTO ID REQUIRED AT OPEN FOR INSPECTION) At YPA Estate Agents our service will move you