

27 Rhode Island Close, Sanctuary Lakes, Vic 3030



Sold Residential Land

Saturday, 11 November 2023

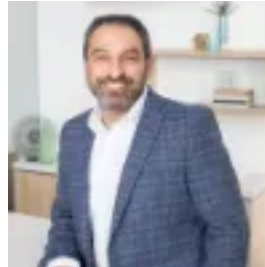
27 Rhode Island Close, Sanctuary Lakes, Vic 3030

Area: 593 m2

Type: Residential Land



Kristy Wang
0393949000



Fadi Saad
0393949000

\$1,300,000

Land is tightly held and rarely offered for sale within Sanctuary Lakes. This luxury home site of 593 sqm (approx.) and with a 15 metre (approx.) rear water frontage boasts spectacular lake views and a magnificent island location. The sunrises and sunsets from this allotment are truly special – relax in our new home and overlook the stunning vistas and water views from your own backyard. Impressive in size and boasting sensational panoramic water vistas, this allotment provides the ultimate setting for your luxury home, maximising the lifestyle offered at this premier resort. Enjoy the tranquil surroundings with walking trails, golf options plus within easy reach of the myriad of facilities and services a Sanctuary Lakes' lifestyle provides. This allotment gives you the space and opportunity to create something truly special and wonderful for your family. Be quick as this sensational block won't last long.