

**27 Sedgefield Avenue, Truganina, Vic 3029**



**Sold House**

Sunday, 20 August 2023

27 Sedgefield Avenue, Truganina, Vic 3029

**Bedrooms: 4**

**Bathrooms: 2**

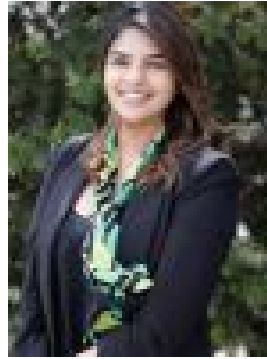
**Parkings: 2**

**Area: 400 m2**

**Type: House**



Mukesh Kumar  
0387441370



Amy Nair  
0499101111

**\$735,000**

Reliance Real Estate presents a stunning property in the Gateway Estate, located in Truganina. This magnificent home offers every desirable quality and is situated in one of Truganina's most sought after locations. The remarkable design of this home offers the orientation to welcome ample natural light and prides itself on creating a comfortable living space with its incredible design and size. An exemplary combination of space, elegance and style, this house is an opportunity you don't want to miss!!! This exquisite home features four spacious bedrooms, two bathrooms, and ample parking space with a two-car garage. The beautiful facade of the house enhances its overall appeal, making it an ideal choice for those seeking a stylish and comfortable living space. This dedicated theatre room space provides the perfect setting for movie nights, gaming sessions, or simply relaxing with loved ones. Features and Fittings:- • High doors throughout • Premium LED downlights • 20mm stone benchtops (Kitchen) • 900mm oven and rangehood • Dishwasher • Hybrid flooring. • Ducted heating and Evaporative cooling. 6.6 kw solar panels. Security Camera Point Of Interests • Wyndham Village Shopping Center - 4 mins • Dohertys Creek P9 - Approx. 2 minutes walk • Williams Landing Station – Approx. 7 mins • Tarneit Train Station approx. 7 minutes • Tarneit Central Shopping Center 7 Minutes • Airport approx. 20 minutes • Melbourne CBD approx. 19 minutes • Mainview Reserve equipped with 2 ovals approx. 5 minutes Spacious interiors, contemporary decor and high-end finishes of this beautiful home create a highly desirable living environment. This is a great opportunity to secure this stunning family home located within close proximity to schools: Westbourne Grammar, Truganina P-9 college, St. Clares Primary and Al-Taqwa College. A 5 minute walk to cricket nets, a community centre and childcare centre. Restaurants close by include: Cilantro, Agra Sweets, Jolly Miller Cafe, Pizza Planet and more. Access to M1, M8 and M80 freeways only a short drive away. NOW is the time to grab this opportunity and be a proud owner of this extra modern sweet home with beautiful view . Come and view this elevated and elegant family home that's certain to attract an assortment of potential buyers. Reliance real estate welcomes you and looks forward to servicing your real estate needs.