

27 Tahourdin Vista, Whitlam, ACT 2611

VERV

House For Sale

Thursday, 6 June 2024

27 Tahourdin Vista, Whitlam, ACT 2611

Bedrooms: 4

Bathrooms: 3

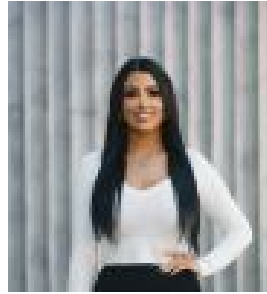
Parkings: 2

Area: 575 m2

Type: House



Jason Roses
0431419847



Sharna Sinclair
0261763476

\$1,615,000 +

This striking architectural newly built designer residence has been constructed by one of Canberra's leading builders; Blackett Homes and is now available for sale. Renowned for their quality of building, carefully considered floorplans, high-level of finish, premium hand-selected inclusions and over 40 years of local building experience. Blackett Homes currently holds the two highest recorded prices for the suburb of Whitlam, having recently broken the record price. When deciding to purchase your next family home and ensuring the financial security for your future, buying from an experienced builder who cares about the product they build matters. Positioned on an elevated and generous parcel of land that was carefully selected, this home offers breathtaking vistas both from the front of the home and to the rear. Blackett Homes engaged renowned architect Vernon Johnston from Marhsall Johnston Architects to carefully design this outstanding and functional floorplan to ensure every possible detail was carefully considered, with the interiors hand-selected by Multi Award-Winning Interior Designer Helen Tadiello from Sugar Designs who ensured the best inclusions and finishes. Number 27 is a stunning double-storey residence that offers four-bedrooms, three-bathrooms, study with custom joinery, a powder room for guests, two separate living areas and a double garage with internal access and opposite parkland. A floorplan that affords privacy with the master bedroom located on the ground level with a stunning walk-in-robe and designer ensuite with under-floor heating and upstairs the remainder of the three-bedrooms and second living space perfect for growing families. As you enter the heart of this newly constructed residence you are greeted with an impressive open-plan living area that flows onto the generous covered timber deck that offers stunning views to the rear of the home. When location matters, deciding to purchase your next home in a bustling and popular suburb is important. Whitlam is a central suburb that is within proximity to Canberra CBD, Lake Burley Griffin, and many of Canberra's most renowned locations, whilst being carefully designed with beautiful parks, walking and bike paths with stunning vistas. We have carefully worked with Blackett Homes to ensure every feature has been mentioned below to provide a complete understanding regarding every possible inclusion. Blackett Homes ensure their homes are built with additional premium inclusions rarely found in homes at this price range. Detail matters when buying your new home. Features Include: - ? Stunning double-storey residence - ? Newly built designer home - ? Built by Renowned Blackett Homes - ? Architecturally designed by Vernon Johnston - ? Multi Award-winning interior Designer Helen Tadiello - ? Double-glazed windows and doors throughout - ? High 2700mm ceilings ground floor, 2550mm to level 1 - ? Quality engineered timber floor to living areas - ? Elevated and generous 575m² block of land - ? Stunning views to the front and rear of the home - ? Opposite parkland and walking trail - ? Built over 300m² of stylish and quality interiors - ? LED bulkhead feature to living area - ? Four generous bedrooms with customer joinery - ? Three designer bathrooms (ensuite & 2x main) - ? Separate powder room upstairs for guests - ? Study with custom joinery and cabinetry - ? Double garage with internal access and custom-made garage door - ? Provisions for 32-amp power point in garage for future electric vehicle charging - ? Segregated master bedroom with walk-in-robe and ensuite downstairs - ? Designer ensuite wall-hung double vanity and underfloor tiling - ? Modern kitchen with stone benchtop, soft close drawers, LED strip light, soft close drawers and quality ASKO kitchen appliances - ? Walk-in pantry with stone benchtop, sink and custom joinery - ? Water tank 5000lirte with pump and rain back switch - ? Renai Enviroflor electric heat pump hot water system - ? Quality 100% wool carpets in all bedroom areas - ? 6.6kw solar system with solar inverted inside garage - ? Two separate ducted heating and cooling air conditioning systems installed - ? All exhaust fans are ducted to external and are sealed when not in use - ? Haymes premium paints used throughout the home - ? Security alarm system installed - ? Fully landscaped gardens with irrigation Additional Features: - ? 90-day maintenance liability period - ? NBN installed (box in garage) - ? Three-phase electrical system - ? Upper floor system has been insulated - ? Additional sound insulation to main bedroom, ensuite, laundry and upper wall bathrooms Date of Completion: 2024 EER: 6.1 Stars Lower Level: 164.51m² Upper Level: 75.54m² Garage: 47.15m² Alfresco: 25m² Porch: 5m²