

270 Pittwater Road, East Ryde, NSW 2113

BresicWhitney

House For Rent

Thursday, 25 January 2024

270 Pittwater Road, East Ryde, NSW 2113

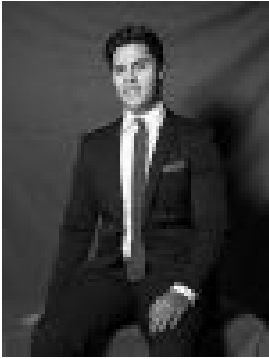
Bedrooms: 4

Bathrooms: 2

Parkings: 4

Area: 866 m2

Type: House



James Meldrum
0415080882



Sonia Beresford
0416686171

\$1,200 per week

An elevated home with treetop outlooks, this residence is wrapped in bushland surrounds and a tranquil environment. So close to Buffalo Creek Reserve, bush walks and top schools, it's a convenient position with easy access to Macquarie business hub and the CBD. Unfurnished. Highlights* Leafy outlooks, entertaining deck with views* Tranquil location & large bushland backyard* Sep. family living, dining & study spaces* Large timber deck, integrated BBQ setting* Modern kitchen w/ dishwasher, gas cooking* Beds w/ built-in robes, king-sized master* Bathroom w/ tub, ensuite plus third WC* Double garage & further off-street parking* Adjoining workshop & under house storage* Family area in desirable school catchments