

2701/37 Mayne Road, Bowen Hills, Qld 4006



Apartment For Rent

Tuesday, 30 April 2024

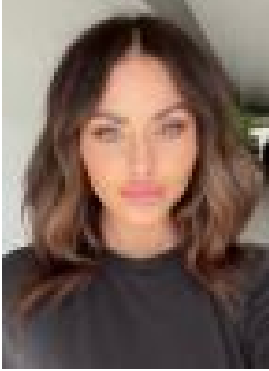
2701/37 Mayne Road, Bowen Hills, Qld 4006

Bedrooms: 2

Bathrooms: 2

Parkings: 1

Type: Apartment



Tamika Wilson

\$720 per week

Introducing Panorama Apartments - Your Ideal Home! Step into modern living at its finest. Your new home offers: **Style:** Experience contemporary elegance with 'Timber Look' tiles in living areas, plush carpeted bedrooms, and sleek engineered stone benchtops in the kitchen. **Quality:** Elevate your lifestyle with premium Bosch appliances that redefine convenience and luxury. **Secure:** Rest easy knowing your safety is a top priority with a secure intercom system and building-wide security access. **Comfort:** Enjoy year-round comfort with ducted air-conditioning and double-glazed glass doors and windows that keep your space peaceful. **Entertain:** Unwind and entertain on your large entertainer balcony, offering panoramic views that will leave you in awe. **Terrace level:** Immerse yourself in breathtaking views of the Brisbane River and City from our unrivalled rooftop. Discover multiple dining options and BBQ areas, making every gathering a memorable one. **Fitness and Relaxation:** Find your balance on Level 5 with a fully equipped gym, sauna, lap pool, additional BBQ facilities, and sun lounges. Panorama Apartments is situated in the heart of Brisbane's vibrant neighbourhood, offering a lifestyle filled with convenience and excitement: **Location:** Only 2km from the Brisbane CBD, you're always close to the action. **Transport:** A mere 2-minute walk to Bowen Hills Train Station (200m) and a 5-minute walk to RBWH Bus Interchange & Hospital Facilities (700m). **Dining and Shopping:** Explore the nearby James Street Precinct for world-class shopping, dining, and nightlife, including the exclusive Calile Hotel, just a 5-minute drive away. **Local Cuisine:** Savor the diverse culinary experiences of King Street Dining Precinct, just a 10-minute walk from your doorstep. **Accessibility:** With a 10-minute drive, you can reach Brisbane Domestic & International Airports effortlessly. Please note that photos are indicative only and may depict a different apartment. Don't let this opportunity slip through your fingers! Register for an inspection now or apply online for pre-approval. Your dream home at Panorama Apartments awaits!