

**276 Campbelltown Road, Bardia, NSW 2565**

**Raine&Horne**  
Ingleburn

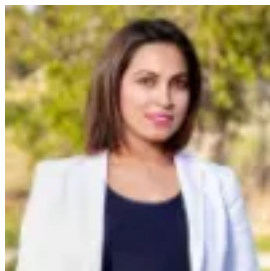
**Sold Residential Land**

Thursday, 4 January 2024

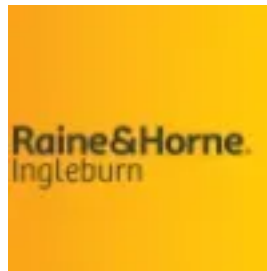
276 Campbelltown Road, Bardia, NSW 2565

Area: 270 m2

Type: Residential Land



Farha Diba  
0405436393



Raine and Horne Ingleburn Sales  
0405436393

**\$470,000**

Farha Diba from Raine & Horne Ingleburn welcomes you to REGISTERED Land, located in the heart of Bardia which is now available for sale. Build your forever home on this centrally located 270sqm Registered Block of land with DA approval, a blank canvas for you to build something truly unique. Bardia is a fast-growing suburb with all the amenities for everyday life in very close proximity. Frontage 9m & Depth 30m Location Features: - 3 mins drive/ 5 minuet walk to Edmondson Park Station (700 meters from property)- 2 mins drive/ 5 minuet walk to Ed.Square Shopping Centre (500 metres from property)- 200 meters to Bardia Public School - 4 mins drive to Edmondson Park Public School - 5 mins drive to St Francis Catholic College - 8 minsdrive to John Edmondson High School - 8 mins drive to TAFE NSW - Macquarie Fields - 6 Minsdrive to Casula Home maker Centre, Costco and other retail stores - 8 mins drive to access Hume Hwy, CasulaFor more enquires or to visit the site please call Farha Diba on 0405 436 393.DISCLAIMER: Every precaution has been taken to establish accuracy of this information but does not constitute any representation by the vendor or agent. Prospective purchasers are urged to rely on their own enquiries.