

**279 Newbury Rd, Craigieburn, Vic 3064**



**Sold House**

Monday, 18 March 2024

279 Newbury Rd, Craigieburn, Vic 3064

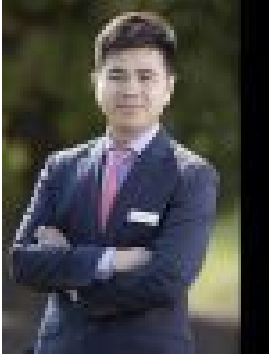
**Bedrooms: 4**

**Bathrooms: 2**

**Parkings: 2**

**Area: 459 m2**

**Type: House**



Brendan Wang  
0425982010



Rachel He  
0433636878

## Contact agent

A single level superstar that absolutely dazzles with space, modern flair, and wonderful natural light, this 4 bedroom + study, 2 bathroom parkside residence delivers an array of impressive highlights for those seeking the quieter lifestyle. This immaculate property will have many admirers, including first time family buyers looking to get into the market. One of the undoubted delights of this haven is the spacious central living hub, which impresses with elegant dark floor tiling and plenty of room for dedicated lounge and dining areas. As part of this central hub, you also get to enjoy the marvellous kitchen which offers elegant stone, a long breakfast bar, and stainless steel appliances. The master bedroom with eye-catching flooring is perfectly placed at the front of the dwelling and offers a walk-in robe and stylish ensuite. This home also comes with 3 other bedrooms with built-in robes, designated study/office, central bathroom with separate toilet, laundry, ducted heating, evaporative cooling, easy surrounding gardens, covered alfresco dining, and a double remote garage with dual access. On an enviable corner block, you're positioned right on the edge of the Mount Ridley Nature Conservation Reserve giving you a rural feel that so many desire. You're also close to Mt Ridley Lookout, Highlands Shopping Centre, Craigieburn Central Shopping Centre, Malcolm Creek parklands, Newbury Primary School, Mount Ridley P-12 College, local buses, and Craigieburn Station.