

27A Hawtin Street, Templestowe, Vic 3106



Unit For Rent

Monday, 22 April 2024

27A Hawtin Street, Templestowe, Vic 3106

Bedrooms: 3

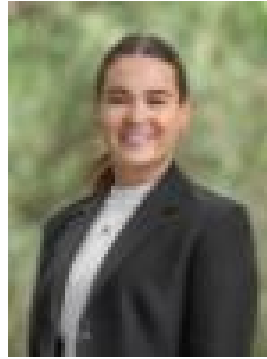
Bathrooms: 2

Parkings: 2

Type: Unit



Tina Dekas
0388414888



Courtney Menahem
0478198845

\$670 per week

A quality location that has Templestowe Reserve on the opposite side of the street, buses nearby and easy access to shops and Yarra River trails. This residence is ideally suited to those on the go. An easy care garden means more time for living and enjoying the open plan layout inside. Features polished hardwood floors, fully equipped kitchen featuring stainless steel appliances, 3 robed bedrooms including the main with walk in robe and ensuite, ducted heating, split system air-conditioner and double remote garage with internal access.