

28/120 Driftway Drive, Pemulwuy, NSW 2145



Unit For Rent

Monday, 13 May 2024

28/120 Driftway Drive, Pemulwuy, NSW 2145

Bedrooms: 2

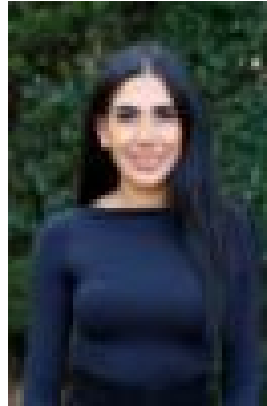
Bathrooms: 2

Parkings: 1

Type: Unit



Taliah Rich
0296314433



Stephanie Halteh
0296314433

\$580 per week

Positioned within the heart of Pemulwuy and only steps to Pemulwuy Village, this two-bedroom unit has a sophisticated layout with an easy flowing open plan living, perfect for those who enjoy entertaining with friends and family. This apartment offers a close walk to shops, parks and all the amenities Pemulwuy has to offer. Features: Two spacious bedrooms; 1 with built in wardrobe & 1 with walk in robe Main bedroom with ensuite and walk-in-robe. Open plan living area opening out onto balcony. Idyllic kitchen with stainless steel appliances, gas cooking and lots of cupboard space. Security block. Security parking. Surrounded by parklands, recreational grounds, cycle tracks, tennis and basketball courts. Just 1 minute walk to Pemulwuy village, it provides an easy access to shops and it's also a short stroll to local parks and public transport. ONLINE enquiry policy -All email & online enquiries received from this website will not be attended to if a number & email address are not provided. Disclaimer: The information presented has been furnished from sources we deem to be reliable. We have not verified whether or not the information is accurate and do not accept any responsibility to any person and do no more than pass it on. All interested parties should rely on their own enquiries in order to determine the accuracy of this information.