

28/30 Slade Street, Carseldine, Qld 4034



Townhouse For Sale

Thursday, 13 June 2024

28/30 Slade Street, Carseldine, Qld 4034

Bedrooms: 4

Bathrooms: 2

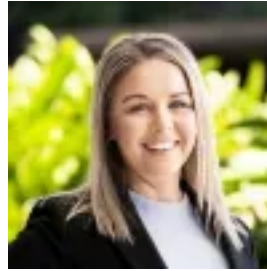
Parkings: 2

Area: 190 m2

Type: Townhouse



Angela Duncan
0732630600



Kristy Carsburg
0732630600

Auction

Register & Watch the Auction live online through the following link: <https://raywhiteaspley.com.au/live-auctions> Ultra modern and beautifully maintained, this stunning townhouse is perfect for those searching for low maintenance living. Located close to schools, transport, shopping & with easy access to the gateway motorway, this home offers four spacious bedrooms, bright open plan living & fantastic private entertaining!- Generous open plan living with air-conditioning - Covered patio and private courtyard perfect for entertaining- Neutral colour tones throughout- Functional kitchen with dishwasher & gas cooktop - 4 bedrooms on upper floor- Generous sized master bedroom with built in robe and ensuite- Family bathroom with shower, bathtub and separate toilet - Double lock up garage- Internal laundry with linen storage- Study nook- Ground floor powder room Rental appraisal: \$675 per week approx. Council Rates: \$450 per QTR approx. Body Corp Rates: \$1253 per QTR approx. Year Built: 2012 approx. Positioned in a quiet complex, just minutes from schools, shops and public transport and approximately 25-30 minutes' drive from Brisbane CBD. Short drive to Aspley Hypermarket with Coles, Woolworths and Kmart. Short drive to Carseldine Railway Station and easy access to Motorway both North and Southbound. Sure to be snapped up - serious offers will be considered, please contact the agent for all further enquiries & to arrange your inspection.