

28 Conifer Place, Kardinya, WA 6163

Sold House

Wednesday, 4 October 2023

28 Conifer Place, Kardinya, WA 6163

Bedrooms: 3

Bathrooms: 2

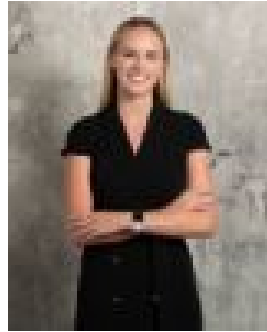
Parkings: 2

Area: 206 m2

Type: House



Leigh Moore
0411017543



Sarah McCredie
0422506176

Contact agent

Completed in October 2022, this immaculate low maintenance home is ready for a new Owner to move in and enjoy! Kardinya Rise is a private estate and a Survey - Strata Development. This means that whilst all of the homes in the estate are free-standing, the roads, lighting, park etc. are owned by the Lot owners and are deemed Common Property. Strata Levies apply (see below). It features:

- Two minor bedrooms, both with double built-in robes.
- Main bathroom with shower, vanity and bath.
- Master bedroom with triple built-in robe and ensuite.
- The ensuite has a shower, vanity, storage behind the mirrors, and wc.
- Open plan kitchen / meals / family.
- The kitchen has a gas cook top, integrated range hood, electric oven, overhead cupboards and stone bench top with waterfall end.
- Skylight over the meals area and coffered ceiling in the family room.
- Separate second wc.
- Laundry with direct access to the drying area.
- Bi-fold stacker doors to the alfresco.
- Ducted reverse cycle air conditioning.
- Vinyl plank flooring to living areas, carpet to bedrooms, LED downlights throughout, skirting boards, roller blinds and exposed aggregate to the driveway and alfresco.
- Double lock up garage with store and shopper's entry.

206sqm (approx.) block. • Admin Levy - approx. \$306/qtr • Reserve Levy - approx. \$10.80/qtr Total - approx. \$316.80/qtr • Council Rates - approx. \$1,872.54pa (for the '23/'24 financial year) • Water Rates - approx. \$856.20pa (for the '22/'23 financial year) Located within close proximity to public transport, schools, Murdoch University, shopping centres, medical facilities such as Fiona Stanley Hospital and St. John of God Hospital, Bibra Lake, Adventure World and much more. For further information, or to make your offer, please contact Leigh Moore or Sarah McCredie today!