

28 Laguna Place, Grovedale, Vic 3216



House For Sale

Wednesday, 12 June 2024

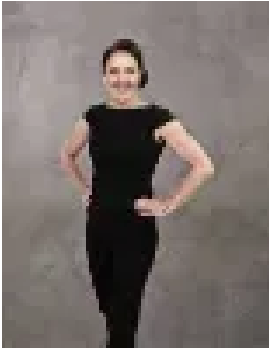
28 Laguna Place, Grovedale, Vic 3216

Bedrooms: 3

Bathrooms: 1

Parkings: 2

Type: House



Michelle Winckle
0352411488



Sophie Spowart
0478957905

\$599,000 - \$649,000

Situated in the heart of Grovedale on a spacious 576 sqm allotment, this neat-as-a-pin home is sure to impress first-home buyers and astute investors alike. Located close to walking tracks, the local reserve, and quality schools, this fantastic home is sure to tick all your boxes! Comprising of 3 bedrooms, all with built-in robes for extra storage. The home boasts two large living areas, a fully equipped kitchen with oven cooktop and dishwasher. The large backyard is the perfect space to put up a large shed (STCA) or plenty of room for the kids and pets to play. Immaculately maintained and located in a sought-after family-friendly pocket of Grovedale. Conveniently located only a stone throw away from the ever-expanding Waurm Ponds Shopping Plaza, world-class Deakin University, Epworth Hospital, multiple schools, state-of-the-art sporting facilities and easily connecting to Melbourne via Waurm Ponds and Marshall train stations or the Ring Road (M1) taking you to the CBD in an hour. This is certainly a great opportunity not to be missed! *All information about the property has been provided to Hayeswinckle by third parties. Hayeswinckle has not verified the information and does not warrant its accuracy or completeness. Parties should make and rely on their own enquiries in relation to this property.