

28 Mitchell Street, Warrnambool, Vic 3280



Sold House

Wednesday, 10 January 2024

28 Mitchell Street, Warrnambool, Vic 3280

Bedrooms: 4

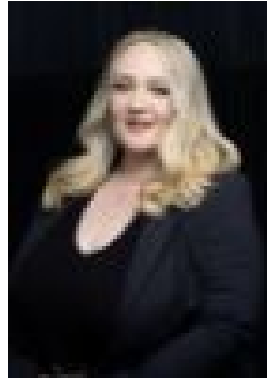
Bathrooms: 2

Parkings: 2

Type: House



Tessa Stephens
0400680566



Monique Brooks
0402740802

Contact agent

A blend of contemporary living entwined with the best materials and workmanship, a home designed by Dean Picken (Designers by Nature) and built-in conjunction with Designer-Built Homes. A sophisticated split-level residence with an impressive north Warrnambool outlook. Situated on a 815sqm block, this impressive family home offers ample room for the entire family. The multiple indoor and outdoor living spaces are sure to leave the whole family impressed, from the private undercover courtyard to the merbau and spotted gum decking which includes a 4 person spa to relax and enjoy the impressive views of the Brierly Reserve after a long day. This home has been designed with a Solar passive design energy efficiency in mind from the Hebel exterior, double glazed windows and doors throughout, 2.8kw solar system, rainwater tank for external use, tinted windows on the northern bedrooms and western stairwell, right through to the improved ceiling installation. Keeping it cool in the summer and warm during winter - with the addition of Reverse cycle air conditioning, gas fireplace in the living room and ceiling fans in all bedrooms & living spaces. Cleverly designed to offer a master retreat at the rear of the home and family hub separate to the main living spaces perfect for young families. The master bedroom with ensuite and walk in robe, whilst the additional bedrooms have WIRs and the 4th bedroom also couples as a home office, gym or even hobbies room with a murphy bed which is a simple yet effective option for guests - coupled with a great outlook and sliding doors to another decked area. The kitchen is the heart of the home with an impressive view over the natural bushland landscape of Brierly, inclusive of stone benchtops, 900mm smeg cooktop and oven, walk in pantry with ample storage perfect for the most avid baker and adjacent to a large laundry with storage too. The home also incorporates ducted vacuuming for your convenience. 28 Mitchell Street also includes a large double garage with additional basement storage under the home. Enjoy living in North Warrnambool, close to all amenities that growing families need, walking distance to shops and schools, with rear access to the Brierly Reserve. Indulge in the epitome of family living with this stunning home where attention to detail is paramount. Meticulously crafted to merge functional and masterful design, the interiors exude opulence while remaining warm and welcoming. Every aspect of this residence has been carefully considered, promising an unrivalled living experience. Being auctioned on the Saturday 25 November, save yourself the hassle of building. The complete package is right here ready for it's next owner at 28 Mitchell Street!