

28 Recreation Drive, Warrnambool, Vic 3280

Sold Residential Land

Friday, 3 May 2024



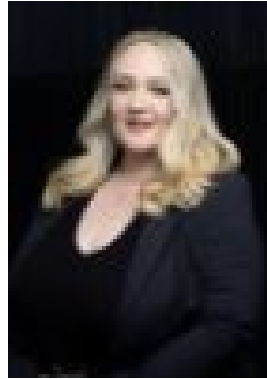
28 Recreation Drive, Warrnambool, Vic 3280

Area: 675 m2

Type: Residential Land



Tessa Stephens
0400680566



Monique Brooks
0402740802

Contact agent

Discover the pinnacle of serene living at 28 Recreation Drive, nestled within the Wollaston Way Estate on a generous 675m² block of titled land. This enchanting piece of real estate offers a delightful haven that perfectly blends tranquility and convenience, making it the right place to call home. Boasting a north easterly facing backyard, this land provides ample space for you to create a comfortable family home. Whether you envision a charming garden oasis or a welcoming outdoor entertainment area, this block offers endless possibilities to bring your vision to life. Being a stones throw away from the parks and playground it will be a fan favourite among the kids. The convenience of this location cannot be overstated. With nearby amenities including schools, shopping centres and recreational facilities, everything you need is just moments away. Embrace the chance to build the home you have always dreamed of. Contact us today to embark on a journey towards creating your perfect lifestyle at 28 Recreation Drive. This could be the start of an incredible chapter in your life.