

**28 Robert Stanley Drive, Mount Warren Park, Qld  
4207**



**House For Sale**

Thursday, 6 June 2024

28 Robert Stanley Drive, Mount Warren Park, Qld 4207

**Bedrooms: 3**

**Bathrooms: 1**

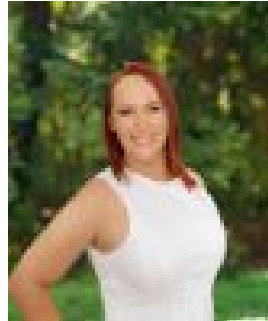
**Parkings: 2**

**Area: 902 m2**

**Type: House**



Eiles Brittany Hunt  
0739103776



Niki Blenkins  
0421229033

## Mid \$800,000's

Welcome to 28 Robert Stanley Drive, a beautifully appointed 3-bedroom home nestled in the serene surroundings of Mount Warren Park. This property offers an exceptional opportunity for those seeking a laid-back lifestyle with the unique advantage of backing directly onto the prestigious Golf Course. Step into your own private oasis, an entertainer's dream, where you'll be greeted by a free-flowing layout and enhanced by soaring high ceilings. The open-plan living and dining areas seamlessly transition to an expansive outdoor entertaining space, providing a perfect backdrop of the pristine golf course and sparkling pool. Encircled by lush, landscaped gardens, this is the ultimate haven to unwind, host unforgettable gatherings, or savor a quiet evening under the stars.

**INSIDE-** 3 bedrooms. Each room offers comfort with built-in robes and ceiling fans. Master bedroom features a walk-in robe and a gorgeous bay window. Well-appointed kitchen with pantry, breakfast bar, and ample preparation space, overlooking the dining room and alfresco area. Spacious main bathroom offers a separate bath and shower, large vanity. Linen cupboard for extra storage. High Ceilings and ceiling Fans; create an airy, light-filled ambiance throughout the home. Double garage providing convenience and peace of mind. Easy-to-maintain flooring throughout the living spaces adds a touch of elegance and practicality.

**OUTSIDE-** Huge outdoor entertaining area: The centrepiece of the home, perfect for an outdoor living suite, BBQ, and pool table. Unmatched views of Mount Warren Golf Course offer a tranquil and picturesque backdrop. In-ground pool, with resort like surrounds. Solar panels to reduce your carbon footprint and save on energy bills. Side Access, ideal for a trailer, caravan or golf buggy. Gate for direct access to the golf course. Enjoy beautifully landscaped gardens with low-maintenance plants, enhancing the property's charm and appeal.

**LOCATION-** 2-minute drive to Mount Warren Park State School. 4-minute drive to Beenleigh Marketplace. 4-minute drive to Beenleigh train station. 5-minute drive to Beenleigh State High School. 10-minute drive to Rivermount College. 30-minute drive to Brisbane CBD. 40-minute drive to The Gold Coast.

Mount Warren Park is a sought-after suburb known for its peaceful atmosphere. Situated in a quiet enclave, this home is ideally located just minutes from local schools, shopping centres, and recreational facilities. With quick access to the M1 highway, commuting to Brisbane or the Gold Coast is a breeze, making it an ideal spot for families and professionals alike. Now is your chance to embrace this exceptional opportunity and secure a home in one of Mount Warren Park's most desirable locations. Experience the perfect blend of comfort, convenience, and stunning golf course living. Contact the Hunt Property Team today and make this stunning property your long-term sanctuary!

"RE/MAX Revolution Real Estate has diligently ensured that the information provided in this advertisement is accurate and reliable. However, we assume no liability for any errors, omissions, or discrepancies contained herein. Prospective buyers are encouraged to conduct their own independent investigations to verify the details."