

**28 Rosella Avenue, Werribee, Vic 3030**



**House For Rent**

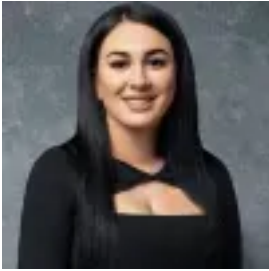
Wednesday, 10 April 2024

28 Rosella Avenue, Werribee, Vic 3030

**Bedrooms: 3**

**Bathrooms: 2**

**Type: House**



Demá Haddad  
0399757080

## **\$400 Per Week**

LJ Hooker Property Point Presents 28 Rosella Avenue, Werribee. Discover the perfect blend of convenience and comfort. This property offers a wealth of amenities, from nearby shops and schools to expansive grasslands, making it an ideal choice for a variety of lifestyles, whether you're an adventurous couple or a growing family.- Featuring three bedrooms, the master bedroom boasts a built-in robe and ensuite, while the remaining bedrooms are served by a central bathroom.- The kitchen, recently renovated, showcases stainless steel appliances including an oven, gas cooktop, range hood, and dishwasher. Abundant bench space, ample storage, and a convenient breakfast bar create a perfect setting for casual meals.- The living areas are thoughtfully arranged, with a spacious living area at the front of the property and a dining area adjacent to the kitchen, leading seamlessly to the expansive backyard.- Luxurious features abound, including a reverse cycle unit for climate control, a European laundry, a sizable backyard with a garden shed, a large carport, and more. Situated approximately 32km from Melbourne's CBD, this property enjoys a prime location with convenient access to a plethora of amenities, including the Pacific Werribee Shopping Centre and Village Cinemas. Additionally, it is within walking distance of esteemed educational institutions such as Wyndham Park Primary and Glen Orden Sports Clubs, plus easy access to public transport. Note: All dimensions provided are approximate. Information given is for general purposes only and does not constitute any representation on behalf of the vendor or agent. School zoning information is based on [findmyschool.vic.gov.au](http://findmyschool.vic.gov.au) as of 08/04/2024 and is subject to change.