

28 Serpentine Road, Erina Heights, NSW 2260

House For Sale

Wednesday, 17 April 2024

28 Serpentine Road, Erina Heights, NSW 2260

Bedrooms: 5

Bathrooms: 4

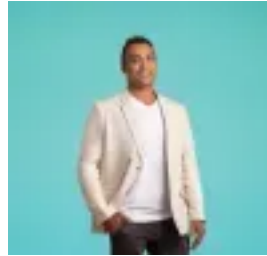
Parkings: 3

Area: 1435 m2

Type: House



Chantel Laing
0243856423



Len Rosemeyer
0243856423

Guide \$2,300,000 - \$2,500,000

Nestled discreetly in the sought-after enclave of Erina Heights, Number 28 embodies the essence of a tropical paradise, offering an unparalleled retreat that captivates and rejuvenates from the moment you arrive home. This exquisite residence unfolds like a meticulously crafted oasis, where every space evokes a sense of architectural layering and sensory delight. As you enter, multiple open-plan living spaces welcomes you with a stylish sunken lounge, completed by a seamless ethanol fireplace adding a touch of modern elegance to a rainforest ambiance. Whether you're hosting indoors or outdoors, the state-of-the-art kitchen seamlessly connects with the vast entertaining space, transforming it into a culinary haven for aspiring chefs. With double ovens, a professional-grade gas cooktop, and a well-appointed butler's pantry, all set against a stunning translucent onyx splashback, this kitchen is a dream for any culinary enthusiast entertaining their family and friends. Step beyond the interiors to a private alfresco paradise where a huge covered entertaining area awaits complete with outdoor kitchen, surrounded by matured lush tropical gardens that promise seclusion and tranquillity. At the heart of it all lies a glistening inground pool, inviting you to immerse yourself in its cool waters and bask in the tropical balmy evenings under the gentle swirl of timber ceiling fans. Retreat to the master suite, a serene sanctuary of its own, adorned with Venetian plaster walls and a luxurious ensuite featuring a ceiling-mounted shower encased in floor-to-ceiling glass. Each of the home's four double-sized bedrooms features personal ensuites, echoing the luxury and privacy of a historic bed and breakfast. Natural light dances through strategically placed skylights, illuminating the elegant shiplap panelling that pays homage to Serpentine Road's pastoral origins. For those blending the balance of home with work, a dedicated office space offers serene garden views and a separate entrance, enhanced by high-speed network connectivity and comprehensive security features. 28 Serpentine Road is more than a home; it's a lifestyle choice for those seeking to merge relaxation, entertainment, and comfort in one extraordinary package. Step into a life where every day feels like a getaway and let your senses be guided by the layers of luxury at Erina Heights' best-kept secret. Property extras: NBN, LPG gas, fans, split system air conditioning, septic sewer system and town water. Council rate: \$717.31pq. Estimated rental return: \$1,100 - \$1,200 per week. For further information or to arrange an inspection outside of open home times, please call Chantel Laing on 0410 433 213.