

**28 Sumar Drive,, Craigieburn, Vic 3064**



**Sold House**

Thursday, 28 March 2024

28 Sumar Drive,, Craigieburn, Vic 3064

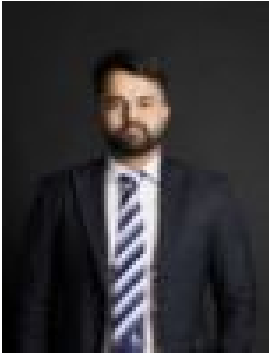
**Bedrooms: 4**

**Bathrooms: 2**

**Parkings: 2**

**Area: 392 m2**

**Type: House**



Jatin Mehta  
0426973800



Jessica Kaur  
0435158564

**\$775,000**

In the realm of upscale living, few experiences rival the luxury and sophistication offered by a custom-built, high-spec residence. Imagine a home meticulously crafted to the highest standards of quality and design, situated in the vibrant community of Craigieburn. With its strategic location within walking distance to Craigieburn Village shops, Oscar Romero School, a rugby oval, and public transport, this property type represents the epitome of refined living and investment potential in Craigieburn. At the heart of this allure is the bespoke craftsmanship and attention to detail that define this custom-built residence. Every aspect of the home, from its architectural design to its interior finishes, exudes luxury and elegance. High-spec features such as premium fixtures, state-of-the-art appliances, and designer touches elevate the living experience to new heights, offering residents a sanctuary of comfort and sophistication. The strategic location of the residence within walking distance to essential amenities adds another layer of appeal. Craigieburn Village shops provide residents with access to a diverse range of retail outlets, dining establishments, and services, ensuring convenience and satisfaction in daily living. The proximity to Oscar Romero School offers families the assurance of quality education for their children, while the nearby rugby oval provides recreational opportunities for sports enthusiasts of all ages. Additionally, easy access to public transport facilitates seamless connectivity to surrounding areas, further enhancing the convenience and accessibility of the location. Beyond its immediate surroundings, Craigieburn boasts immense potential for growth and development. As a thriving suburb on the outskirts of Melbourne, it is experiencing rapid urbanization and infrastructure improvements. With planned developments and increasing demand for housing, property values in Craigieburn are poised for substantial appreciation in the foreseeable future. This presents an attractive opportunity for investors seeking to capitalize on capital gains and rental income, positioning Craigieburn as a lucrative destination for long-term investment. In conclusion, investing in a luxurious and custom-built, high-spec residence in Craigieburn offers a blend of luxury, convenience, and investment potential. With its bespoke craftsmanship, strategic location, and promising prospects for growth, this property type represents a sound investment choice for discerning homeowners and investors alike. By recognizing and embracing the inherent opportunities of this property, individuals can elevate their living experience and secure their financial future in the dynamic community of Craigieburn. Due diligence checklist - for home and residential property buyers - <http://www.consumer.vic.gov.au/duediligencechecklist>