

28 Sunny Crescent, Ripley, Qld 4306



House For Sale

Thursday, 13 June 2024

28 Sunny Crescent, Ripley, Qld 4306

Bedrooms: 4

Bathrooms: 2

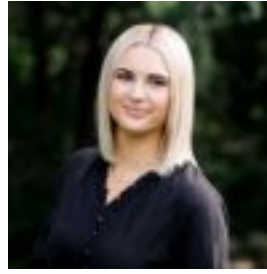
Parkings: 2

Area: 413 m2

Type: House



Ben Ramsey
0411428474



Taylah Sherrin
0457047720

\$829,000+

Welcome to your slice of paradise in Ripley, one of South East Queensland's fastest-growing suburbs! Nestled amidst picturesque landscapes and boasting contemporary design, this BRAND NEW property offers the epitome of modern living. With four thoughtfully designed bedrooms, two beautifully appointed bathrooms, and a spacious two-car garage, every aspect of this home has been crafted with your comfort and convenience in mind. Immerse yourself in the tranquility of Ripley's natural beauty right from your doorstep, where lush greenery and scenic views create an idyllic backdrop for everyday living. Whether you're enjoying family time in the spacious living areas or exploring the family-friendly neighborhood with its parks, schools, and essential amenities, this property offers the perfect blend of luxury, convenience, and community. Don't miss the opportunity to make this stunning property your own - contact us today to schedule a viewing and start your journey towards a new chapter of stylish, modern living in Ripley!

Key Features:- Four good sized bedrooms with ducted air-conditioning, ceiling fans & built in robes- Master bedroom with large walk-in robe, modern ensuite, ducted air-conditioning & ceiling fan- Large modern ensuite with double basins, extra large his & hers shower and private toilet- Stylish main bathroom with separate shower & bathtub- HUGE Luxe kitchen with oversized waterfall concrete benchtop and splash back, gas cooking, ample storage and a walk-in pantry- Open plan kitchen/living area with glass sliding doors that open up out onto the outdoor alfresco space- Formal carpeted living area/media room- Internal laundry with ample storage and Luxe cabinetry- Ducted air-conditioning throughout- Ceiling fans throughout- Timber look flooring throughout with carpets in the bedrooms and formal living space- Outdoor alfresco area with ceiling fan - the perfect spot for entertaining with family & friends!- Fully fenced & landscaped CORNER block

Location:- 7 minutes to the Ripley Valley State School*- 6 minutes to the Ripley Valley State Secondary College*- 5 minutes to Ripley Town Centre (Coles, Bakery, Chemist, Gym, Medical Facilities, Cafes, Vet etc.)*- 14 minutes to Orion Shopping Centre Springfield*- 6 minutes to Centenary Highway*- 2 minutes to Cunningham Highway*- 40 minutes to Brisbane CBD*- 15 minutes to Ipswich CBD**approximately

This property is one not to be missed. If you would like more information on the property or wish to book a private inspection, please call Ben Ramsey on 0411 428 474 or Taylah Sherrin on 0457 047 720 today. We look forward to meeting you at one of our open homes! Chat to you soon.