

28 Thorby Avenue, Leichhardt, NSW 2040

BresicWhitney

Sold House

Thursday, 4 January 2024

28 Thorby Avenue, Leichhardt, NSW 2040

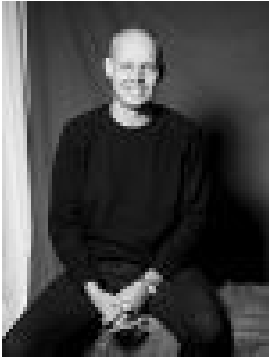
Bedrooms: 3

Bathrooms: 2

Parkings: 1

Area: 313 m2

Type: House



Darren Pearce
0417080167



Renae Dickey
0423598573

Contact agent

Auction Location: On site A renovated freestanding home between Norton Street shopping and Annandale Village life, this double-fronted residence offers a relaxed garden retreat, along with a unique parkside position. With architect-extended indoor/outdoor space, its design credentials are obvious, while the backyard setting has a pedestrian gate opening directly to a green park and children's playground. An incomparable family package and a prized cul-de-sac position on a 313 sqm. Highlights* Indoor/outdoor flow, ideal NE aspect* Gate to adjoining lawns & playground* Top area, Annandale school catchment* Preserved bungalow facade & carport* Separate formal living & family spaces* Outdoor entertaining deck, pizza oven* Timber/concrete floors, marble kitchen* Under-house office/studio & cellar space* Heated bathroom floors, ducted air-con* Council R \$2,322 pa. Water R \$780 pa.