

28 Willandra Circuit, Warragul, Vic 3820

House For Sale

Saturday, 11 May 2024



28 Willandra Circuit, Warragul, Vic 3820

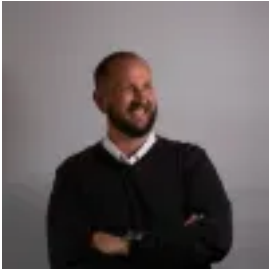
Bedrooms: 4

Bathrooms: 2

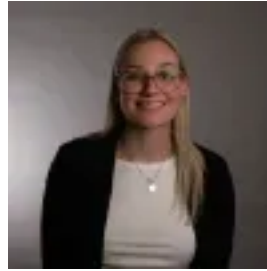
Parkings: 3

Area: 697 m2

Type: House



Anthony Rabl
0447137258



Abbey Fisher
0447137258

\$660,000 - \$720,000

This stunning four-bedroom home is perfect for families seeking space, comfort, and convenience. Boasting two living areas, both equipped with split-system air conditioning, this home offers great space for the whole family to enjoy. The generous master bedroom features a walk-in robe and stunning well-lit ensuite with double shower and the comfort of two shower heads. The kitchen boasts stainless steel appliances and the addition of a butler's pantry. The open-plan living area seamlessly flows to the paved alfresco area, creating an ideal setting for indoor-outdoor entertaining. The low-maintenance yard and side access offer functionality and ease of use on the 697m² allotment. Situated within the desirable Waterford Rise Estate, this home enjoys proximity to scenic parklands, walking tracks, and amenities such as Western Park Reserve and Warragul's Golf Course & Country Club. With easy access to the M1 Freeway and the townships of Warragul and Drouin, this property offers an exceptional living experience!