

28 Woodland Parkway, Buff Point, NSW 2262

Raine&Horne.

House For Rent

Thursday, 25 April 2024

28 Woodland Parkway, Buff Point, NSW 2262

Bedrooms: 5

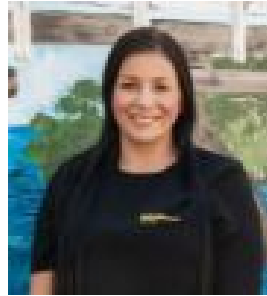
Bathrooms: 2

Parkings: 2

Type: House



Catherine Auld
0243971026



Kate Hardy
0243971026

\$750 Per Week

Explore coastal living at its finest in this captivating 5-bedroom, 2-bathroom property boasting stunning water views. With dual living potential, this home offers versatility, making it perfect for a variety of lifestyles. Whether you're entertaining guests or enjoying peaceful moments on the balcony, this residence promises a tranquil lifestyle. Key Features:- Boasting five spacious bedrooms, four offer the convenience of built-in robes- Two separate living areas, providing ample space for separate living and entertainment- Two functional bathrooms, one featuring a bath for ultimate relaxation- The timber kitchen provides plenty of cupboard space, making meal prep a breeze- Entertain guests at the bar, creating unforgettable memories in the heart of your home- Discover modern convenience in the additional kitchenette- Internal laundry- Two balconies, each offering tranquil ambiance of the water views- Fully fenced yard, perfect for outdoor activities and relaxation*TO VIEW OUR PROPERTIES, IT IS RECOMMENDED TO PRE-REGISTER & RSVP TO CONFIRM YOUR ATTENDANCE AT THE ADVISED INSPECTION. THIS WILL ENABLE US TO INFORM YOU OF ANY CHANGES, UPDATES OR CANCELLATIONS TO THE INSPECTIONS.*APPLICATIONS ARE TO BE SUBMITTED THROUGH TENANT OPTIONS: www.tenantoptions.com.au*RAINE & HORNE TOUKLEY/BUDGEWOI ASK THAT YOU COMPLETE AN APPLICATION FORM PRIOR TO VIEWING THE HOME.*THIS ALLOWS OUR OFFICE TO PROCESS YOUR APPLICATION, PUT IT FORWARD TO THE LANDLORD TO MAKE A PRIVATE INSPECTION IF YOUR APPLICATION HAS BEEN SHORTLISTED IF THE PROPERTY IS STILL TENANTED.*INSPECTIONS & AVAILABILITY ARE SUBJECT TO CHANGE.E & OE. Please note that all information herein is gathered from sources we believe to be reliable, however we cannot guarantee its accuracy and interested parties should rely on their own enquiries.