

**2801/311 Hume Highway, Liverpool, NSW 2170**



**Apartment For Rent**

Tuesday, 14 May 2024

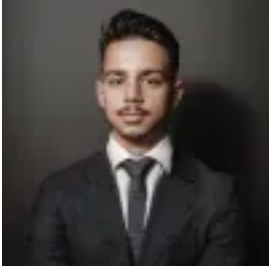
2801/311 Hume Highway, Liverpool, NSW 2170

**Bedrooms: 3**

**Bathrooms: 2**

**Parkings: 1**

**Type: Apartment**



Angelos Tsikis  
0296474303

**\$750 per week**

We invite you to inspect our new rental listing. Property features:-Sun filled open plan living and dining area-Queen size bedrooms + potential third bedroom completed with built-in robes-Spacious balcony perfect for additional storage area-Stylish kitchen with gas appliances and stone benchtop-Ducted air conditioning, secure parking and storage cage Property facts:-Preferred lease term: Minimum 6 + months-Pets allowed: Subject to application-Storage available: Yes-Parking available: 1 x large disabled parking spot Building and location:-Communal BBQ area & Roof top current -10 minute walk from Liverpool train station-5 minute walk to local restaurants and shops For further details or to arrange an inspection, please contact Chidiac representative directly. Please ensure you register for upcoming inspections to receive notifications of any inspection changes or cancellations, as well as new listings. Prospective tenants should make their own independent enquiries, including those related to utility and internet service providers as some may have limited availability, and additional connection fees may apply. The information contained within this advertisement is for illustrative/marketing purposes only and does not form part of the lease agreement and should be used as a guide only.