

2806/38 Rosina Street, Adelaide, SA 5000

ALL ADELAIDE

House For Sale

Tuesday, 19 March 2024

2806/38 Rosina Street, Adelaide, SA 5000

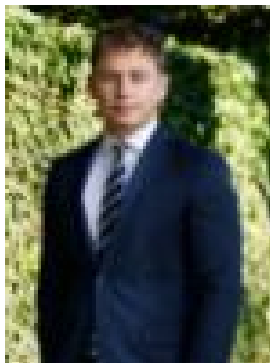
Bedrooms: 2

Bathrooms: 2

Parkings: 1

Area: 92 m2

Type: House



Blake Bryant
0476957176

\$850,000 to \$870,000

Located in the prestigious Sofitel Hotel - Luminesque Apartments, perched on the 28th floor and offering breathtaking views from Adelaide Hills to the western beaches of Adelaide, this luxurious 2-bedroom apartment presents the ultimate in opulent high-rise living. Enjoy uninterrupted romantic sunset views over the western suburbs while embracing the contemporary amenities of this elite modern building. Luxury facilities include gymnasium, swimming pool, sauna and restaurant, enhancing your everyday lifestyle in this luxurious rare release. The apartment boasts palatial appointments including Tasmanian oak floors, 2.7m square set ceilings, Clipsal Satin light switches, double glazed windows and ducted reverse cycle air-conditioning. Relax in a spacious combined living/dining room overlooking the city with distant hills views. Watch the ever-changing weather rolling from the southern suburbs as you marvel at the uninterrupted vista. A deluxe modern kitchen overlooks the living area, boasting marble waterfall breakfast bar, black glass splash backs, crisp gloss cabinetry, induction cooktop, stainless steel appliances, integrated dishwasher and ample cupboard space. Both bedrooms provide uninterrupted views to the coast. Bedroom 1 features an ensuite bathroom and built-in robe. Bedroom 2 offers a built-in robe and direct access to the private balcony. A 2nd bathroom and tidy walk-in laundry provide valuable amenities, while a dedicated car park space provides secure parking for your valuable vehicle and a handy storage cage is perfect for those seldom used goods. Walk to the Adelaide Central Market, Rundle Mall, the Adelaide Oval, Casino or Entertainment Centre. A rare release luxurious apartment that will appeal to the privileged few. Briefly: * 28th Floor luxury high-rise apartment with panoramic 'hills to sea' views * Located in the prestigious Luminesque Building above the Sofitel Hotel * Tasmanian oak floors, 2.7m square set ceilings, Clipsal Satin light switches, double glazed windows * Spacious living area with uninterrupted views to the south, east & west * Deluxe modern kitchen features marble waterfall breakfast bar, black glass splash backs, crisp gloss cabinetry, induction cooktop, stainless steel appliances, integrated dishwasher and ample cupboard space * 2 spacious bedrooms, both with built-in robes * Bedroom 1 with ensuite bathroom * Bedroom 2 with direct bathroom access * Generous private balcony with views to the western beaches * 2nd bathroom and tidy walk-in laundry * Ducted reverse cycle air-conditioning * Dedicated secure car park space * Secure storage cage Building amenities include: * Fine dining restaurant * Gymnasium * Swimming pool * Sauna * Audio-visual door bell and door release Perfectly sited in the Adelaide City South residential precinct close to all desirable. Walk to the Adelaide Central Market or catch the tram to the Adelaide Casino, Entertainment Centre or Adelaide Oval. Invest in the cosmopolitan lifestyle that Adelaide City has to offer and reap the rewards with your own slice of luxury accommodation. Nearby unzoned primary schools include Sturt Street, Goodwood, Richmond & Gilles Street Primary Schools. Enjoy the convenience and privilege of zoning to Adelaide High School & Adelaide Botanic High School. Quality private schooling is available nearby at St Mary's College, Pulteney Grammar School, Muirden College, Christian Brothers College & St Aloysius College. Zoning information is obtained from www.education.sa.gov.au Purchasers are responsible for ensuring by independent verification its accuracy, currency or completeness.