

2808/80 A'Beckett Street, Melbourne, Vic 3000



Apartment For Rent

Saturday, 4 May 2024

2808/80 A'Beckett Street, Melbourne, Vic 3000

Bedrooms: 2

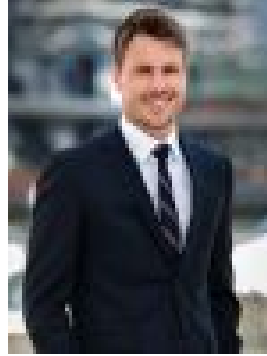
Bathrooms: 2

Parkings: 1

Type: Apartment



Eva Christodoulou
0390911400



Dylan Emmett
0390911400

\$750 per week

Enjoying a wonderful position on the corner of A'Beckett Street and Elizabeth Street, this two-bedroom, two bathroom residence.Views towards the south and west including the surrounding city will be a delight to experience on a daily basis. The balcony is one place to enjoy the terrific vistas, with this undercover area an outdoor haven for alfresco dinners and quiet morning coffees.The central living and meals zone has easy access to the stone kitchen which is fitted with stainless steel appliances including a dishwasher. A master bedroom has entry to its own ensuite, while also embrace BIRs in both bedrooms (beds also with balcony access), quality main bathroom, concealed laundry, reverse cycle cooling, secure intercom, storage cage, secure car space, and access to a resident's lounge, business centre, swimming pool, spa, cinema and a 53rd floor rooftop sky lounge and terrace that delivers panoramic views of city skyline.The sensational city location has you so close to all the action. You have amazing restaurants and eateries nearby including Glass Half Full Café, Marche Board Game Café, Nene Chicken, Pie Face, and Workshop bar just to name a few. You're also close to RMIT University, Melbourne Central with train station, Queen Victoria Market, State Library of Victoria, and free trams.