

285 Bruce Crescent, Wallarah, NSW 2259

Sold Acreage

Friday, 18 August 2023

285 Bruce Crescent, Wallarah, NSW 2259

Bedrooms: 4

Bathrooms: 2

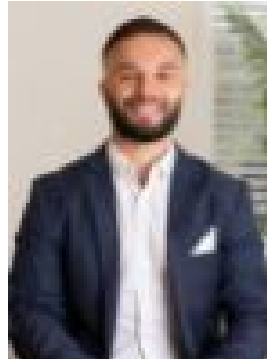
Parkings: 6

Area: 1 m2

Type: Acreage



Abdullah Choudhari



Jason Cozens
0414447035

\$1,465,025

A hidden gem and a rare find, this single level hobby farm property will exceed all your expectations. Tucked away in a rural setting & yet approx 5 minutes from the M1 freeway, Warnervale train station, local and private schools, this site ticks all the boxes and more. Set on 3.2 acres of flat usable land this property has been freshly repainted and features 4 bedrooms all with built ins, 2 bathrooms (ensuite to main), 2 machinery sheds, a recently built inground pool, and a 2 car carport. This property is perfect for a young family with plenty of space for the kids to run around or for a family looking to do a hobby farm. You will love the features of this home: - 3.2 usable acres - near new Pool - 2 Machinery Sheds - tank water and enviro cycle - 5 Minutes to m1, Warnervale train station, local and private schools