

288A Noble Avenue, Greenacre, NSW 2190



Duplex/Semi-detached For Sale

Wednesday, 12 June 2024

288A Noble Avenue, Greenacre, NSW 2190

Bedrooms: 5

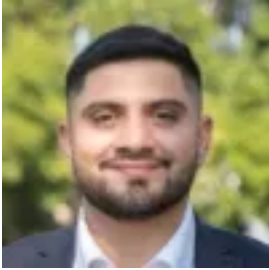
Bathrooms: 3

Parkings: 3

Area: 348 m2

Type:

Duplex/Semi-detached



Ahmad Elfata
0286685754

Price guide \$1,150,000

Intuitively designed to deliver the ultimate environment for family living, this sunlit residence provides a serene and private retreat with multiple in/outdoor spaces for relaxation and entertaining. Modern and elegantly appointed, its stylish interiors feature dual living areas, five bedrooms and an alfresco entertaining space. Located for everyday convenience, the property is situated just 1.1km from Chullora Marketplace, quality schools and Lockwood Park.- Seamless and open plan lounge/dining space adjoins the secondary living room- Extensive all-season entertainers' terrace features an in-built barbecue kitchen- Private child-friendly backyard boarded with low-maintenance gardens/landscape- Gourmet kitchen offers stone benches, stainless steel appliances and a dishwasher- Built-in wardrobes are fitted to all five of the double bedrooms, two with ensuites- Master bedroom boasts a walk-in robe and a private balcony with elevated views- Designer bathroom features floor-to-ceiling tiles, separate soaking tub and shower- Ducted air-conditioning, down-lights, polished tiles, highlight windows, garden shed- Single automatic garage plus off-street parking, plenty of storage, internal laundry- Placed within 1.7km of Greenacre shopping village, public transport and eateries

DISCLAIMER: While PACE Property Agents have taken all care in preparing this information and used their best endeavours to ensure that the information contained therein is true and accurate, but accept no responsibility and disclaim all liability in respect of any errors, inaccuracies or misstatements contained herein. PACE Property Agents urges prospective purchasers to make their own inquiries to verify the information contained herein.