

29/11-15 Lindfield Road, Helensvale, Qld 4212



Villa For Sale

Wednesday, 17 April 2024

29/11-15 Lindfield Road, Helensvale, Qld 4212

Bedrooms: 2

Bathrooms: 1

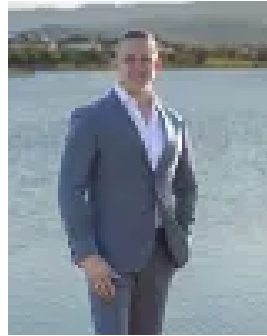
Parkings: 1

Area: 200 m2

Type: Villa



Sophie Watts
0755734777



Tyler Benson
0755734777

Contact Agent

Welcome to a home that accommodates your perfect starting point in the property market, a place for you to invest / build equity and add to your portfolio or enjoy the leisurely pace of your retirement years. Nestled in the serene and established neighbourhood of the Helensvale area, this charming villa offers an ideal lifestyle for those seeking comfort and convenience. Situated in the sought-after Lindfield Rd complex of Helensvale Villas, this property boasts a tranquil and private backyard, ample parking inside the (non-gated) complex for guests, and minimal body corporate fees, ensuring a stress-free living experience. Key Features:

- Combined kitchen/dining area flooded with natural light, creating an inviting space for gatherings
- Well-appointed kitchen featuring a dishwasher, stove, oven, and ample storage space
- Master bedroom equipped with built-in wardrobes, ceiling fan, and large windows for natural ventilation
- Second bedroom with built-in wardrobe, ceiling fan, and abundant natural light
- Main bathroom semi-renovated with timeless white decor, a corner shower, vanity, and a separate toilet
- Comfort ensured year-round with split system air-conditioning and ceiling fans
- Private rear yard with potential for veggie gardens and room for the little ones to play and explore in safety and privacy
- Full length, paved outdoor entertainment area off the sliding door to the dining room and kitchen window making this the ideal area for a built in BBQ and TV to catch the footy
- Single lock-up garage with additional off-street parking, plus ample visitor bays
- High rental potential of approximately \$550 p/w with very low vacancy rates and high demand for the area
- Prime location directly opposite Helensvale Primary, golf course, skate park, community courts. Within walking distance to essential amenities such as medical facilities, cafes, shops, senior schools, daycare centres, and a multitude of public transport options to Brisbane CBD, G Link and GC beaches.

•* Land size is an approximation only and not an accurate measurement as this is a Body Corporate complex and individual exclusive use areas are not provided. Don't Miss Out! This well presented home is a rare opportunity and selling fast! Offering everything from a tranquil lifestyle, generously sized living spaces, privacy, convenience and the all round easy life. Whether you're an investor, a first-time buyer or retiree, this property ticks all the boxes. DISCLAIMER: We have in preparing this advertisement used our best endeavours to ensure the information contained is true and accurate, but accept no responsibility and disclaim all liability in respect to any errors, omissions, inaccuracies or misstatements contained. Prospective purchasers should make their own enquiries to verify the information contained in this advertisement.