

29/215 Aspinall Street, Watson, ACT 2602



Sold Townhouse

Wednesday, 23 August 2023

29/215 Aspinall Street, Watson, ACT 2602

Bedrooms: 3

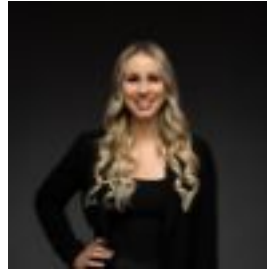
Bathrooms: 2

Parkings: 2

Type: Townhouse



Tom Wiggins
0468771763



Jaimy Butler
0411957736

Contact agent

What you see: The ideal floorplan for family living with the convenience of a low-maintenance design. What we see: A lifestyle investment. See more: North facing open plan living Light filled throughout Kitchen featuring stone benches and ample storage Appliances include Miele oven, Bosch dishwasher and gas cooking Master bedroom featuring built-in robe and ensuite with double basin Guest suite featuring built-in robe and ensuite Additional bedroom with built-in robe Ducted reverse cycle heating and cooling Additional ground floor powder room Private north facing courtyard Seamless indoor to outdoor flow Two car garage with internal access Within a 2 minute walk to Mount Majura Walking and Riding Trail Within a 3 minute drive to Watson Shopping Precinct Within a 3 minute drive to Majura Primary School Within a 5 minute drive to Australian Catholic University Within a 19 minute drive to Mount Ainslie Within a 19 minute drive to Canberra CBD Living: 152m² Courtyard: 65m² Garage: 38m² Built: 2005 EER: 6.0 Rates: \$1,335 p.a Land tax: \$1,535 p.a Body corporate: \$4,231 p.a Rental appraisal: \$640 - \$690 p.w Disclaimer: Please note the property will not be marked under offer and inspections will not cease until the exchange of contracts has taken place. The above figures are approximate only. The material and information contained within this marketing is for general information purposes only. HIVE Property does not accept responsibility and disclaim all liabilities regarding any errors or inaccuracies contained herein. You should not rely upon this material as a basis for making any formal decisions. We recommend all interested parties to make further enquiries.