

29/43 Hereford Street, Glebe, NSW 2037



Townhouse For Rent

Monday, 22 April 2024

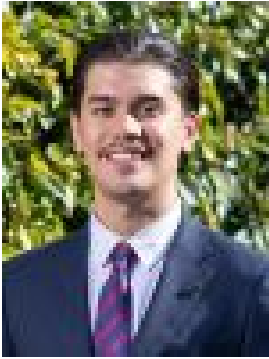
29/43 Hereford Street, Glebe, NSW 2037

Bedrooms: 3

Bathrooms: 1

Parkings: 1

Type: Townhouse



Jonathon Voisin
0498012853



Tylah Mayor
0406380580

\$1,050 pw

Private and spacious townhouse with tranquil leafy outlooks, just metres from Glebe Point Road's vibrant cafes, restaurants and pubs all within easy access to transport and the city.- 3 bedrooms all with built-ins and carpet- Seperate lounge and dining, large rear courtyard- Well equipped kitchen with dishwasher and servery- Full bathroom plus guest w/c and internal laundry- Secure undercover car space- Short walk to Jubilee Park light rail, schools and shops- Pets considered by application