

29/497-507 Pacific Highway, Killara, NSW 2071

STONE

Apartment For Sale

Thursday, 8 February 2024

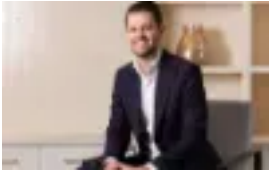
29/497-507 Pacific Highway, Killara, NSW 2071

Bedrooms: 2

Bathrooms: 2

Parkings: 2

Type: Apartment



Matt Payne
0290953500



Max Ma
0290953500

Auction: 2nd March Onsite

Desirably placed to the serene, quiet, rear of a premier security building, this exquisitely appointed apartment delivers the very best in contemporary living with arresting elevated views that stretch across the treetops to the eastern horizon. A showcase of exceptional light and quality, carefully maintained to still present as new and promising an easy lifestyle with walk to rail convenience. Unparalleled in spacious open ambience and premium finishes, making it perfect as a sophisticated first home or sumptuous empty nest, wrapped in landscaped gardens. -?Impressive 136sqm on title in a quiet and elevated rear position with views-?Large, covered balcony attracts lashings of sunshine for alfresco enjoyment-?In/out flow from spacious living + dining, cabinetry, premium security screens-?Fresh paint and gorgeous new flooring in muted sophisticated on-trend tones-?Absolutely stunning De Gabriele kitchen, marble benchtops, custom storage-?All Miele appliances: gas cooktop, oven, dishwasher, rangehood, breakfast bar-?Two fresh and light double bedrooms with views, step-in robes, main ensuite-?Two flawlessly presented tiled bathrooms, showers, luxurious soaker bath-?Vanity tops rich with marble, plentiful storage, European style internal laundry-?Double basement parking and oversized storage room, multiple visitor parking-?Security system, video intercom, gas point, gas hot water, reverse air con-?Walk to rail and village, near Gordon + Lindfield shops, Greengate Hotel-?Lindfield Public and Killara High Schools zones, close to Ravenswood