

29 Autumn Crescent, Mount Eliza, Vic 3930



House For Sale

Monday, 22 April 2024

29 Autumn Crescent, Mount Eliza, Vic 3930

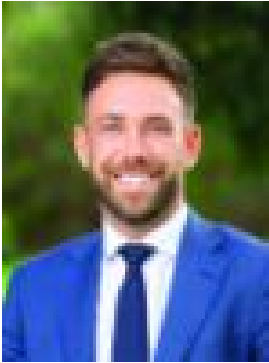
Bedrooms: 3

Bathrooms: 1

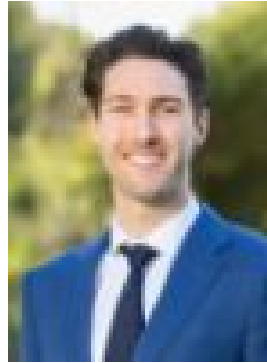
Parkings: 2

Area: 702 m2

Type: House



Ellis Schofield
0431063163



Terry Wheeler
0397812111

\$950,000 - \$1,045,000

Pleasantly presented only paces from Peninsula Grammar and Mount Eliza Park, this cherished family home reveals a quintessential charm amongst its private and peaceful surroundings. Set within a neighbourhood of families, with great coffee just around the corner, enjoy spacious living options awash with natural light and a secure yard with studio and cubby. Welcoming with an exceptional synergy across a layout that feels instantly tranquil, an inviting flow embellished by solid timber floors and a wealth of natural light generates a gentle connection to the home's leafy landscape. Served by a kitchen of practical design, the home's floorplan encourages family connection across zoned living and dining dimensions, where a wood heater brings an ambience to interiors warmed by gas ducted heating. Each with built-in robes and carpet underfoot, the three bedroom layout encircles a complete family bathroom welcoming functionality for guests and family. Leading outside with a private covered decking, the home opens to a large rear yard where a private studio space inspires a creative force for hobbies, work or recreation. Bordered by gardens, the backyard welcomes space for imaginative kids to play with a children's cubby, while a split-system air conditioner, plantation shutters, double carport and secure frontage headline the features. Set only moments from Mount Eliza Village and Mount Eliza Primary School, and a short drive from convenient freeway access, shops and parklands. Should you require any further information, please do not hesitate to contact Ellis Schofield on 0431 063 163 anytime. Please note Photo ID is required for all inspections. All information about the property has been provided to Ray White by third parties. Ray White has not verified the information and does not warrant its accuracy or completeness. Parties should make and rely on their own enquiries in relation to the property.