

# 29 Castlecrag Drive, Kallaroo, WA 6025

## House For Sale

Tuesday, 9 January 2024

29 Castlecrag Drive, Kallaroo, WA 6025

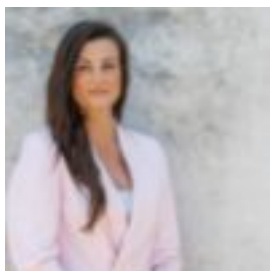
**Bedrooms: 5**

**Bathrooms: 2**

**Parkings: 2**

**Area: 1242 m2**

**Type: House**



Lucia Assinder

0498131392

## OFFERS

Privately positioned to the rear, backing on to the gorgeous Kiernan Park, sitting opposite the sprawling Belrose Park across the road and boasting ample driveway parking space for your boat, caravan or trailer, this charming 5 bedroom 2 bathroom two-storey brick-and-tile home is as solid as they come and will definitely benefit from the addition of further personal modern touches throughout. It is also nestled on a huge 1,242sqm (approx.) block, only adding excitement to its wonderful potential. Beyond double doors, a central open-plan family, games, meals and kitchen area acts as the hub of the floor plan, headlined by the stylishly-renovated kitchen itself – playing host to sleek stone bench tops, double sinks, a large appliance nook, a pantry, glass splashbacks, modern stainless-steel range-hood, gas-cooktop and oven appliances and a white dishwasher. It all overlooks what is essentially a sunken games room with a bar and storage. A carpeted formal lounge room with a ceiling fan is the perfect place to relax and unwind in total peace and quiet, whilst another carpeted upstairs retreat – or versatile fourth living space – can be whatever you want it to be and has its own built-in brick fireplace to help counter the winter chill. The pick of the sleeping quarters is a larger master-bedroom suite with split-system air-conditioning and an intimate ensuite bathroom, comprising of a shower and vanity. Outdoors, a shimmering below-ground salt water swimming pool complements covered patio entertaining, with a built-in brick barbecue and plenty of natural shade created by the splendid surrounding treetops only adding to the overall appeal. Get those creative juices flowing, at the same time enhancing your dream coastal family lifestyle in a wonderful location that is close to the North Shore Country Club, the magnificent Westfield Whitford City Shopping Centre, St Mark's Anglican Community School, glorious Mullaloo Beach, Whitfords Station for public transport off the freeway, terrific public schools, Hillarys Boat Harbour and even the new Hillarys Beach Club. A canvas for endless parkside possibilities awaits! Other features include, but are not limited to:

- Double front entry doors, opening into a tiled foyer
- Low-maintenance flooring to the casual living spaces
- Woodlook Gas Fire to the family/meals/kitchen area
- Outdoor alfresco access, via the games room
- Carpeted bedrooms with built in robes
- Separate bath and shower in the main family bathroom
- Separate laundry with storage and external access for drying
- Powder room
- Study or 5th Bedroom
- Evaporative ducted air-conditioning
- Split-system air-conditioning in the master bedroom
- Security cameras
- Security-alarm system
- Skirting boards
- Security doors and screens
- Double lock-up garage with internal shopper's entry
- Playground for the kids in the park next door with side access gate

Contact Lucia on 0498 131 392 for more information Are you ready to #experience remarkable