

29 Chelsea Court, Harrington Park, NSW 2567

Residential Land For Sale

Friday, 29 March 2024



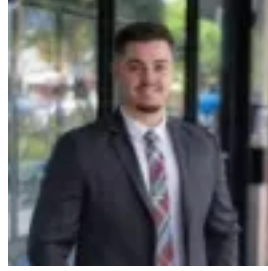
29 Chelsea Court, Harrington Park, NSW 2567

Area: 685 m2

Type: Residential Land



Gary Tomlins
0412394654



Jaylen Berroa
0408505148

LAST CALL - AUCTION THURS 6PM LAKESIDE GOLF CLUB

** The Auction for 29 Chelsea Court Harrington Park is this Thursday 18th April 2024. It will be held in-room at Lakeside Golf Club Camden - 50 Raby Rd, Gledswood Hills NSW 2557. Registration starts from 6pm. Please contact the Sales Agent if you would like a copy of the contract prior to the day, or to discuss further. **Welcome to 29 Chelsea Court, Harrington Park! This prime vacant land opportunity awaits you. Located in the heart of Harrington Park, this 685 sqm block of land presents an exceptional opportunity to build your dream home in a highly sought-after location. Situated in a desirable neighborhood, this parcel of land offers the perfect canvas to create your own haven and be conveniently close to amenities. With shopping centers, schools, parks, and recreational facilities just a stone's throw away, this location ensures a lifestyle of convenience and comfort for you and your family. Don't miss out on the chance to secure this rare opportunity to own a block of land in Harrington Park and bring your vision to life.* Registered block* 685.3sqm * Battle axe BlockDisclaimer: All information contained herein is true and correct to the best of our ability however, we encourage all interested parties to carry out their own enquiries at all times and to not solely rely on the information and photos provided here within as well as discussions with agents or their representatives.