

# 29 Generation Crescent, Mambourin, Vic 3024



## House For Rent

Wednesday, 10 April 2024

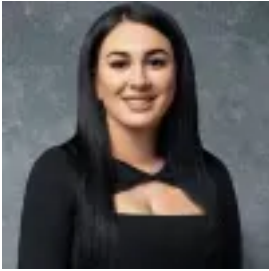
29 Generation Crescent, Mambourin, Vic 3024

**Bedrooms: 3**

**Bathrooms: 2**

**Parkings: 2**

**Type: House**



Demá Haddad  
0399757080

**\$470 per week**

LJ Hooker Werribee | Hoppers Crossing proudly introduces 29 Generation Crescent, Mambourin. This stunning residence beckons your inspection. Offering an ideal living space, the property features a luminous living area, three bedrooms, and two bathrooms, complemented by meticulously landscaped grounds and parking for two vehicles. Nestled in the vibrant suburb of Mambourin, residents can relish in a community-centric environment while enjoying seamless access to established amenities.- This residence exudes contemporary charm with modern interiors, neutral hues, and tiled flooring throughout. The expansive open-plan family and meals area seamlessly integrates with the stylish kitchen.- The kitchen is a culinary haven boasting sleek stone countertops, a convenient breakfast bar, and premium stainless-steel appliances, including an upright gas cooker. Abundant storage options, including overhead cabinetry and a pantry, cater to organizational needs.- The accommodation begins with a spacious master suite positioned at the front of the home, offering a walk-in robe and a luxurious private ensuite. Two additional bedrooms feature built-in robes, while the family bathroom indulges with a lavish bathtub.- Situated on a low-maintenance block, the property showcases fully fenced grounds adorned with lush grassy lawns and meticulously landscaped gardens.- Additional features include a double remote-control garage with internal access, a separate laundry with ample linen storage, ducted heating, split system cooling, roller blinds, downlights, and more!Mambourin presents an idyllic locale for tranquil living, boasting proximity to a burgeoning array of amenities such as Wyndham Vale Shopping Centre, Manor Lakes Shopping Centre, and the charming Little Growling Cafe. Esteemed educational institutions including Laa Yulta Primary School, Wyndham Vale Primary School and Manor Lakes P-12 College are within reach, while the nearby Lollipop Creek Reserve offers a serene retreat. For commuters, convenient access to public transport options including Wyndham Vale Station and a well-connected bus network awaits.**Note: All dimensions provided are approximate and intended for general informational purposes only. School zoning information is as per [findmyschool.vic.gov.au](https://findmyschool.vic.gov.au) as of 08/04/2024 and subject to change.**