

29 Horsley Crescent, Melba, ACT 2615



House For Sale

Saturday, 18 November 2023

29 Horsley Crescent, Melba, ACT 2615

Bedrooms: 4

Bathrooms: 1

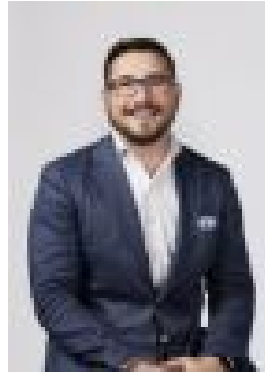
Parkings: 2

Area: 762 m2

Type: House



Hannah Green
0422381055



Eoin Ryan-Hicks

Auction

Auction Location: In Room | LJ Hooker Canberra City Auction HQ This is a delightful family haven that seamlessly blends comfort, style, and convenience. Boasting 4 well-sized bedrooms, each complemented by a central bathroom, this residence offers a perfect sanctuary for your family, and you can just move straight in! There has been fresh painting and new carpet throughout, you can just move straight in. The entire front of the home is north-facing, you are greeted by the sun-soaked front living area, a true haven for relaxation. Adjacent is a connected dining room, artfully segregated from the updated kitchen. The kitchen features modern amenities, including electric cooking and an oven, creating a culinary space that beckons creativity. A second living space adds versatility to your lifestyle. For extra ease, the home is powered by solar to save you money on your energy bills. Feel the warmth of the front living area, enhanced by a cozy fireplace, perfect for chilly evenings. Additionally, revel in year-round comfort with reverse cycle heating and cooling throughout the home. The main bedroom goes the extra mile with its own split system, offering personalised climate control. Step outside through the external access points from both the laundry and kitchen to discover a beautiful back verandah – an ideal venue for entertaining guests or enjoying quiet family moments. The sprawling 760sqm backyard provides ample space for kids and furry friends to play, and the double garage, complete with extra storage at the back, ensures all your storage needs are met. This home exudes character, with vibrant gardens and colourful flowers enhancing the exterior charm. Beyond the aesthetics, the location adds another layer of appeal. Close to Kippax shops and Belconnen Town Centre, you'll find all your shopping needs met, with arterial roads providing seamless connections to the city. 29 Horsley Crescent is more than just a house; it's a warm embrace, a canvas for family memories, and a haven where modern conveniences meet classic charm. Make this your home, where every day unfolds with comfort, style, and a touch of natural beauty. Rates: \$2,802 p.a. approx. Land Tax: \$4,281 p.a. approx. EER: 1 All information contained herein is gathered from sources we consider to be reliable. However, we cannot guarantee or give any warranty about the information provided. Interested parties must solely rely on their own enquiries.