

29 Lythrum Street, Doreen, Vic 3754

CHWYLA

Sold House

Tuesday, 20 February 2024

29 Lythrum Street, Doreen, Vic 3754

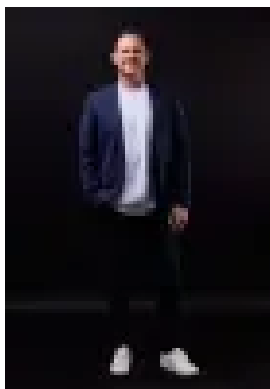
Bedrooms: 4

Bathrooms: 2

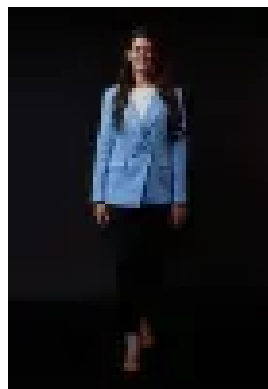
Parkings: 2

Area: 716 m2

Type: House



Paul Chwyla
0386009995



Stacy Richards
0386009995

\$1,121,250

Make more of : 716m² block 4 Four bedrooms 2 Two bathrooms with stone benchtops 2 Powder room 2 Two living areas 2 Office / third living area 2 Study nook 2 Double garage 2 Super wide, exposed agg driveway 2 Side access for trailer 2 Front porch Merbau decking 2 Security door 2 High ceilings 2 Square set cornices 2 Downlights 2 Feature lighting 2 Blackbutt timber floorboards 2 New carpet 2 Plantation shutters 2 Stone kitchen benchtops 2 Coffee station / buffet 2 900mm appliances 2 Integrated dishwasher 2 Plumbed fridge space 2 LED strip lighting to kitchen 2 Spa bath 2 Laundry with stone benchtops and significant cabinetry 2 Master with oversized, fully fitted out walk-in robe 2 Three bedrooms with built-in robes 2 Ducted vac 2 Ducted heating 2 Evaporative cooling 2 Oversized glass sliding doors 2 Covered side alfresco 2 Additional covered rear alfresco 2 Extended Merbau deck area 2 Fire pit area with fire pit 2 Garden shed 2 Cubby house / storage 2 Concrete to side of home with gate access 2 Privacy hedging 2 Beautiful landscaping 2 150m to Graffs Cottage Park, BBQ area 2 250m to Eminence Boulevard bus stop 2 300m to Senecio Drive playground 2 450m to Hazel Glen College 2 1.8km to Laurimar shops 2 The initial appeal – Inside, the kitchen is newly renovated, custom built and just stunning. We also need to mention the Blackbutt timber floorboards, brand new carpet and high ceilings with square set cornices. Even the laundry feels ultra luxe: it matches your new kitchen with stone benchtops, textured tiles and cabinetry everywhere. Outside, there's a super wide exposed agg driveway with side access for your trailer, jet ski or motorbike. The main attraction – A beautifully finished home on a 716m² block. The best bit? Double alfrescos [side and rear] that are joined by extended Merbau decking. What does that mean? Double the friends over, double the good times and double the memories in your new family home. Your journey here starts this Saturday.