

# 29 Mardango Crescent, Batchelor, NT 0845



## House For Sale

Friday, 24 May 2024

29 Mardango Crescent, Batchelor, NT 0845

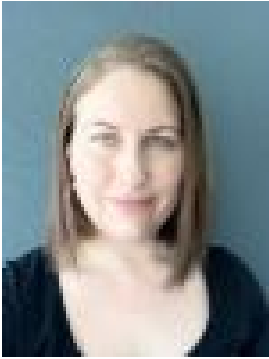
**Bedrooms: 5**

**Bathrooms: 1**

**Parkings: 4**

**Area: 1810 m2**

**Type: House**



Nuriye Piening  
0429826650

**\$280,000**

Situated in the heart of Batchelor, this property offers easy access to local amenities and services. Within walking distance, you'll find schools, parks, shops, and public transport options. Take a short drive and you'll reach the stunning Litchfield National Park, where you can explore beautiful waterfalls, hiking trails, and picnic spots. The house needs TLC but with your own personal touch you can turn this home into a beautiful property. Features:- Semi Elevated Home- Beautiful large breezeway - Open plan living- 5 bedrooms- 1 bathroom- 2nd bathroom needs to be completed- Internal Laundry- Fully fenced Date Built: 2007Area Under Title: 1810m<sup>2</sup>Zoning: LR (Low Density ResidentialRent: \$250 per week tenants leased till 12 December 2024