

29 O'Donnell Drive, Figtree, NSW 2525



Duplex/Semi-detached For Sale

Thursday, 7 December 2023

29 O'Donnell Drive, Figtree, NSW 2525

Bedrooms: 4

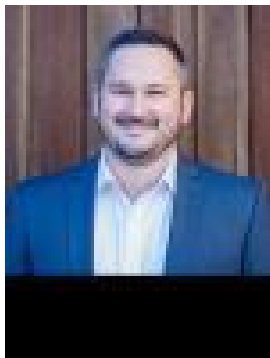
Bathrooms: 2

Parkings: 4

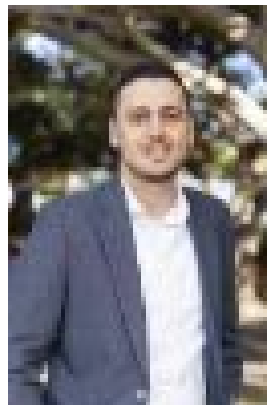
Area: 835 m2

Type:

Duplex/Semi-detached



Lindsay Begley
0412661512



Slavisa Djukic
0499901313

Offers Invited

Situated in the premier suburb of Figtree this unique duplex is sure to attract the interest of any savvy investor. The property consists of 2 x two bedroom single level duplexes both with their own bathroom, laundry, garage space and an abundance of outdoor space not commonly seen in properties of this nature. Located only moments to local schools, transport, Figtree Grove and just under 10 minutes to Wollongong CBD and beaches. Rental Appraisal (garages included): Unit 1: \$450 - \$470 per week Unit 2: \$450 - \$470 per week • Modern kitchens with adequate storage • Spacious bedrooms with blinds • Timber flooring throughout • Generously bright & airy living zones • Well-presented bathrooms with separate shower & bath • Rates- Council: \$605.99pq | Water: \$173.29pq