

**29 Oleander Drive, Hoppers Crossing, Vic 3029**



**Sold House**

Thursday, 14 September 2023

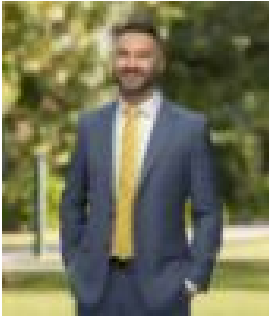
29 Oleander Drive, Hoppers Crossing, Vic 3029

**Bedrooms: 3**

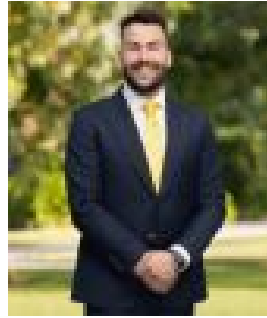
**Bathrooms: 2**

**Parkings: 1**

**Type: House**



Dean Caramia  
0431601399



Petar Krnjeta  
0406912320

**\$605,000**

Nestled in the heart of Hoppers Crossing, this captivating three-bedroom, two-bathroom residence boasts a harmonious blend of comfort, style, and convenience. Welcome to your new family haven. As you step through the welcoming entrance, you'll immediately appreciate the spaciousness of this home. With two generous living areas, this property offers ample room for family gatherings, relaxation, and entertainment. The open-plan design seamlessly connects the kitchen, meals area, and living space, creating a fluid and inviting environment for both everyday living and special occasions. The modern kitchen is a chef's dream, featuring sleek cabinetry, quality appliances, and a breakfast bench that not only provides ample preparation space but also serves as a casual dining spot for busy mornings. Whether you're cooking up a storm or simply enjoying a cup of coffee, this kitchen is designed for both functionality and aesthetics. One of the standout features of this property is the expansive rear yard, which opens directly from the living area. The large outdoor space is perfect for those who love to entertain, play, or simply unwind in the fresh air. A stylish pergola provides a comfortable retreat, whether you're hosting a barbecue or just enjoying a quiet moment with a book. For year-round comfort, this home is equipped with ducted heating and split system cooling, ensuring a cozy atmosphere during winter and refreshing relief in the heat of summer. Families with school-age children will appreciate the prestigious Cambridge Primary School zone, offering excellent educational opportunities just moments from your doorstep. Additionally, the convenient location provides quick access to Pacific Werribee, a retail and entertainment hub with a plethora of shopping and dining options. Commuting is a breeze with Hoppers Crossing Train Station nearby, connecting you to the broader Melbourne metropolitan area. 29 Oleander Drive offers a harmonious blend of modern living, family comfort, and an enviable location. Don't miss the opportunity to make this your forever home. Contact us today to arrange a private viewing and experience the lifestyle this property has to offer. Your dream home awaits.