

29 St Claire Avenue, South Morang, Vic 3752

Rata & Co.

Sold House

Sunday, 15 October 2023

29 St Claire Avenue, South Morang, Vic 3752

Bedrooms: 3

Bathrooms: 2

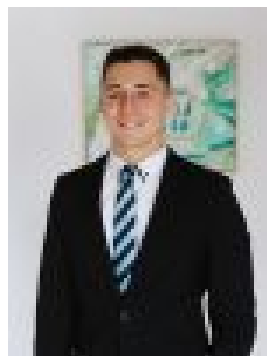
Parkings: 2

Area: 525 m2

Type: House



Tony Lombardi
0433223278



Lachlan Mills
0427637130

\$837,000

Perfectly positioned in the highly sought-after Mill Park Lakes Estate and within close proximity to The Promenade Shops, Westfield Shopping Centre, South Morang Train Station, reputable schools and gorgeous parklands, this entertainer's delight is sure to offer something for everyone. Comprising three spacious bedrooms with ensuite and walk in robe to master, large lounge upon entry, stunning timber kitchen boasting ample cabinetry and quality stainless steel appliances including dishwasher, adjacent meals and family area to the rear. Journey outside to find a superb alfresco that offers peaked roof and loads of space, protected from the weather and ideal for all year round entertaining along with a generous rear yard complete with garden shed. Blessed with an abundance of extra features which include the convenience of a recently updated ducted heating unit, hot water system, roller door and rangehood plus the added delight of evaporative cooling, striking timber floor boards, roller shutters, ceiling fans in all bedrooms, landscaped gardens, plus an oversized double garage with internal and rear access. With immaculate presentation throughout, this home is suitable for all first and second home buyers plus investors - enquire today!!**PHOTO ID REQUIRED**Due diligence checklist - consumer.vic.gov.au/duediligencechecklistPrivacy Policy and Privacy Collection Notice - rataandco.com.au/privacy-policyMaterial Facts - please refer to the contract of sale and vendor statement for any/all material facts.Land size sourced from land.vic.gov.au. This document has been prepared to assist solely in the marketing of this property. While all care has been taken to ensure the information provided herein is correct, Harcourts Rata & Co takes no responsibility for any inaccuracies. Accordingly all interested parties should make their own enquiries to verify the information, including and not limited to land size