

29 Waterford Way, Glenmore Park, NSW 2745

BESPOKE. REALTY.

House For Sale

Thursday, 16 November 2023

29 Waterford Way, Glenmore Park, NSW 2745

Bedrooms: 4

Bathrooms: 2

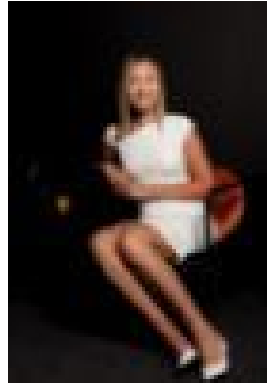
Parkings: 2

Area: 429 m2

Type: House



Marie Grima
0433788820



Briannan Nand
0490160662

Property Launch

Discover unparalleled elegance in this stunning 2-storey home nestled in the coveted Blue Hills area of Glenmore Park. Boasting four bedrooms upstairs, a beautiful timber staircase, and a luxurious parents' retreat, this home offers comfort and style. Enjoy modern amenities like an ensuite, main bathroom, and air conditioning. The lower level features a spacious lounge, powder room, internal laundry, kitchen with gas cooking and dishwasher, connected dining and family room. Step outside to two outdoor entertaining areas, with the option to add a spa to enhance your outdoor experience. The double garage with a drive-through option provides convenience. Immaculate lawns and gardens surround, completing this picture-perfect property.