

29 White Fig Drive, Glenning Valley, NSW 2261



House For Sale

Tuesday, 30 April 2024

29 White Fig Drive, Glenning Valley, NSW 2261

Bedrooms: 4

Bathrooms: 2

Parkings: 2

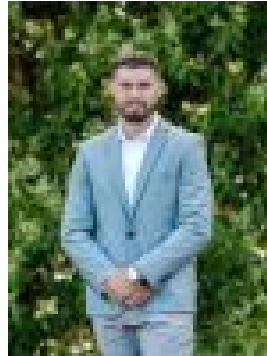
Area: 513 m2

Type: House



Ian Boyle

0243139043



Blair Ryan

0416946406

Guide \$1,100,000

Located on a corner block in the popular Glades Estate is this near new single level McDonald Jones home offering a spacious layout flowing out through the sliding stacker doors to the large covered outdoor entertaining area with a private low-maintenance backyard. Boasting four good-sized rooms all with built-ins with the master also offering a walk-in robe and ensuite. The spacious kitchen featuring stone bench tops, gas cooking, and stainless-steel appliances will appeal to the chef in the family with a large open-plan dining & living space. Off-street parking for multiple vehicles with a double lock-up garage with internal access.

- Four bedrooms all with built-ins
- Master bedroom offering ensuite & walk-in robe
- Two bathrooms
- Quality built McDonald Jones home
- Ducted air conditioning
- Modern kitchen with gas cooking
- Open plan dining & living space
- Large covered outdoor entertaining area
- Water tank
- Low maintenance corner block with colour bond fencing
- Minutes to local beaches & M1

If you are looking for a near new single level home in a great location then this home needs to be on your shopping list! Call Ian Boyle today on 0416 169 606 to book an inspection. Disclaimer: All information about the property has been provided to Ray White Berkeley Vale by third parties. Ray White Berkeley Vale has not verified the information and does not warrant its accuracy or completeness. Parties should make and rely on their own enquiries in relation to the property. We have obtained all information in this document from sources we believe to be reliable; however, we cannot guarantee its accuracy. Prospective purchasers are advised to carry out their own investigations.