

**29 Yakola Parade, Alexandra Headland, Qld 4572**



**House For Sale**

Monday, 18 March 2024

29 Yakola Parade, Alexandra Headland, Qld 4572

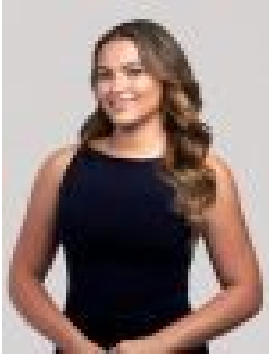
**Bedrooms: 4**

**Bathrooms: 2**

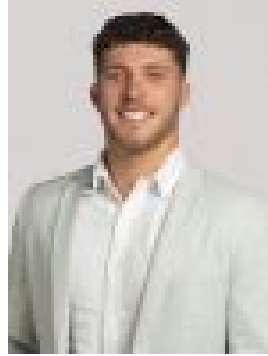
**Parkings: 3**

**Area: 787 m2**

**Type: House**



ANGELINA SWEENEY  
0413633275



OLLIE LEHMANN  
0456879703

## High \$2m's

Angelina Sweeney and Ollie Lehmann take immense pride in presenting this exceptional home to the market. Situated in a prime location and meticulously crafted, this home stands as the quintessence of opulent living. The residence seamlessly combines breathtaking views, walkable access to the beach, impeccable quality, and thoughtful design, creating an unparalleled living experience. Boasting four spacious bedrooms, 2.5 bathrooms, and a massive 3-car garage, the residence sprawls across an expansive 787m<sup>2</sup> property. The heart of this home is undoubtedly its massive kitchen, a culinary haven featuring a 6-meter-long bench with ample storage, a gas cooktop, induction electric cooktop, Smeg appliances, a breakfast bar, and a walk-in pantry. Every detail has been meticulously crafted to provide a seamless blend of functionality and elegance. One of the home's standout features is the panoramic vista that greets residents from various vantage points. Scenic views include Mount Coolum, ocean glimpses, Noosa, and Moreton Bay Island, offering a daily spectacle of natural beauty. Three bedrooms boast private balconies, allowing occupants to savor these picturesque views at their leisure. The master grand suite takes luxury to the next level, featuring a spacious ensuite, a soothing bath, and an expansive area with panoramic vistas that create a retreat within the home. The thoughtful design extends to the outdoor spaces, where the back deck seamlessly connects to the yard, providing sweeping views all the way to Noosa. The garage is not only a practical space for vehicles but also a versatile area with extra high ceilings, a sink, excessive storage, and workspaces for added convenience. With its perfect synthesis of modern comfort and natural beauty, this home stands as a testament to refined living in an enviable location.

Features:- Spacious 4 bedrooms, 2.5 bathrooms, and a 3-car garage-  
Expansive 787m<sup>2</sup> property- A massive kitchen featuring a 6-meter-long bench with storage, a gas cooktop, induction electric cooktop, Smeg appliances, a breakfast bar, and a walk-in pantry.- Scenic views include Mount Coolum, ocean glimpses, Noosa, and Moreton Bay Island.- Garage features extra high ceilings, a sink, excessive storage, and workspaces for added convenience.- Impeccable quality throughout the home.- Three bedrooms feature balconies with picturesque views.- The master grand suite offers a spacious ensuite, bath, and an expansive area with panoramic vistas.- The back deck seamlessly extends to the yard, providing sweeping views all the way to Noosa.- Perfect synthesis of modern comfort and natural beauty.