

2921 Farrendale Road, Narromine, NSW 2821



Other For Sale

Friday, 16 February 2024

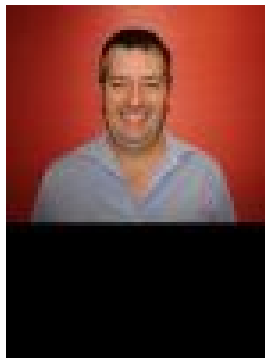
2921 Farrendale Road, Narromine, NSW 2821

Area: 911 m2

Type: Other



Alexander Bailey Sandy
0406109492



Paul Kelly
0428281428

Auction (If Not Sold Prior)

"Lynnwood" 2921 Farrendale Road, Narromine NSW 2821 Area:- 911 hectares (2,251 acres) Location:- 36km south west of Narromine- 80km west of Dubbo- All weather road to front gate, road access on two sides Country:- Gently sloping country to parts level with some lower gilgai country- Mostly soft red loam with some lighter intrusions and heavy chocolate clay on the lower country- Original timber includes Belah, Myall, Box, Gum and Pine Land Classification:- 535 hectares (1,322 acres) current cultivation- 335 hectares new cultivation- Remaining 376 hectares usable grazing and shade lines- Potential to develop more country to cultivation (subject to permission) Water:- Bore equipped with electric submersible on farm- High tank, reticulates to seven 17,000L tanks and troughs throughout farm- Three good sized stock dams- Well watered for the current operation Fencing:- Approximately 5km of new internal fencing- Grazing country has been partially fenced into cell grazing- Balance stock proof - mostly hinge joint, barb wires with steel end assemblies Improvements:- Steel and timber cattle yards, 500 head capacity- Solar panels- Power available in various spots of property for potential home site Auction (If Not Sold Prior)- 11am, 21st March 2024 - Soul Food Depot & Gallery Narromine - Contact your preferred agent to book and inspection or for more information Contact:- Sandy Bailey - 0406 109 492- Russ Hallaran - 0422 752 497- Paul Kelly - 0428 281 428- Ashley McGilchrist - 0427 280 773 All care has been taken in compiling this information sheet but it is prepared on instructions and details supplied by the vendor, for whom we act as agents only, and we cannot accept any responsibility for errors or omission (if any). Intending purchasers should satisfy themselves as to the correctness of these particulars.