

29A Adelaide Road, Padstow, NSW 2211

AUSREALTY

Sold Duplex/Semi-detached

Thursday, 19 October 2023

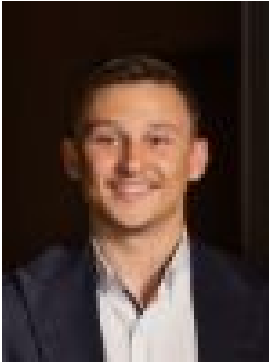
29A Adelaide Road, Padstow, NSW 2211

Bedrooms: 5

Bathrooms: 3

Parkings: 2

Type: Duplex/Semi-detached



Daniel Tonkonogy

0452281852

\$1,360,000

"This home always made me feel relaxed and cosy. The nights eating dinner around the table with my family are treasured moments. With the recent updates plus generous outdoor space, this home has a lot to offer." - Owner- This recently updated duplex offers a modern and tastefully designed interior with plenty of character and natural light, perfect for families seeking a convenient and modern home- Five spacious bedrooms, all with built-ins plus ensuites in two bedrooms, access to a covered balcony from two of the bedrooms and a versatile fifth bedroom that doubles as a study- Three bathrooms with sleek finishes and modern fixtures, main has a separate glass shower and bathtub- Open-concept living and dining rooms with access to a covered entertaining area, creating a warm and welcoming atmosphere perfect for entertaining- Contemporary gas kitchen with stainless steel appliances, spacious countertops, and ample storage space- This home features floorboards, air-conditioning, a convenient garage for storage or parking, plus a second living room and a lounge room with access to a covered verandah facing an established garden- Enjoy the low maintenance yard with manicured greenery and undercover alfresco space- Situated in a prime location nearby to esteemed schools such as St Therese Catholic Primary School & Padstow Park Public School , shops, train and bus stations as well as plenty of beautiful parksCouncil Rate: \$399/quarterWater Rate: \$263.45/quarter